



Protected Area Indicator Report January 2013

The Islands Trust Policy Statement states that:

It is Trust Council's policy to work towards the establishment of a network of protected areas that preserves representative ecosystems in their natural state and in sufficient size and distribution to sustain their ecological integrity. (3.1.2)

Trust Council encourages agents of the government of British Columbia or the government of Canada, Crown corporations, municipalities, regional districts, nongovernment organizations, property owners and occupiers to protect environmentally sensitive areas and significant natural sites, features and landforms through voluntary stewardship, acquisitions, conservation covenants and careful management. (3.1.11)

The ecosystems of the Islands Trust Area are home to [88 federally-listed and 355 provincially-listed endangered and threatened species¹](#). Losing even one species to extinction can throw a whole ecosystem off balance, negatively affecting other species including humans. At-risk species have a better chance of survival if their homes are protected. A plant or animal species becomes endangered when its home disappears. To protect species from becoming endangered, some of every type of ecosystem should be protected, despite its sensitivity or threat level.

Most protected areas in the Islands Trust Area are small. In 2010, 329 of the 480 protected properties were smaller than 5 hectares. Larger protected areas support more species and have lower extinction rates for species. We can improve the value of small protected properties in the islands by creating natural buffers around them and by creating natural corridors connecting them to other protected areas.

The data in the charts below is derived from the Islands Trust's geographic information system's parks and protected area and terrestrial ecosystem layers.

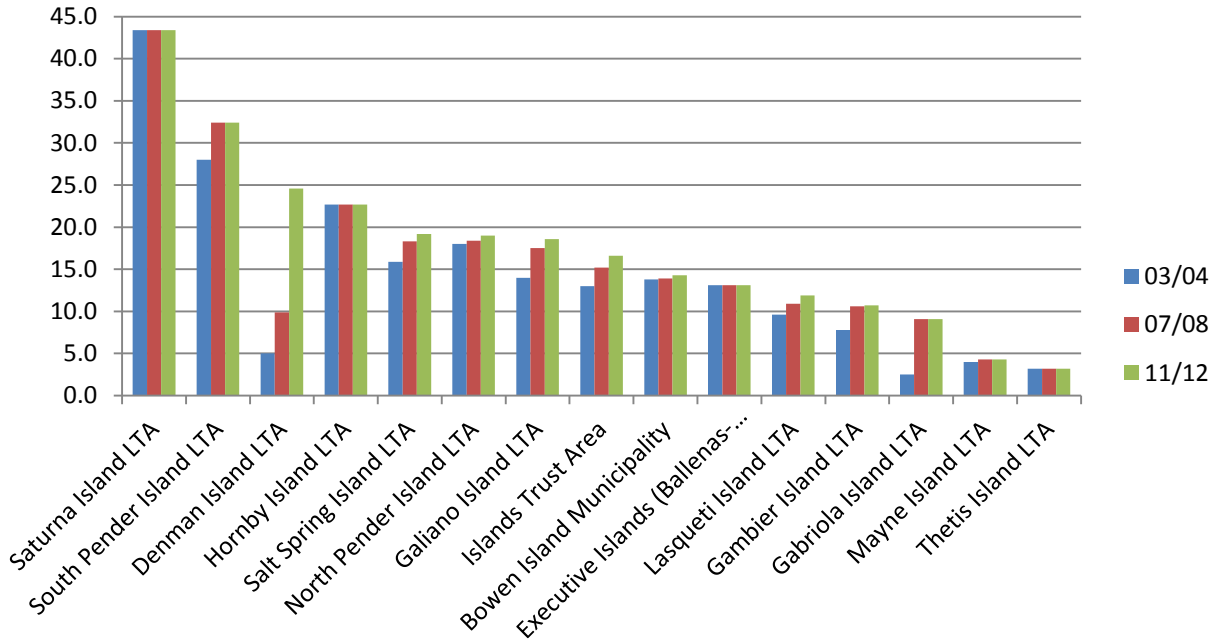
Protected areas in the Islands Trust Area consist of:

- Parks
- Nature reserves
- Nature sanctuaries
- Ecological reserves
- Watershed lands (Salt Spring Island)
- Heritage forest lands (Galiano Island)
- Conservation covenants held by a variety of agencies²

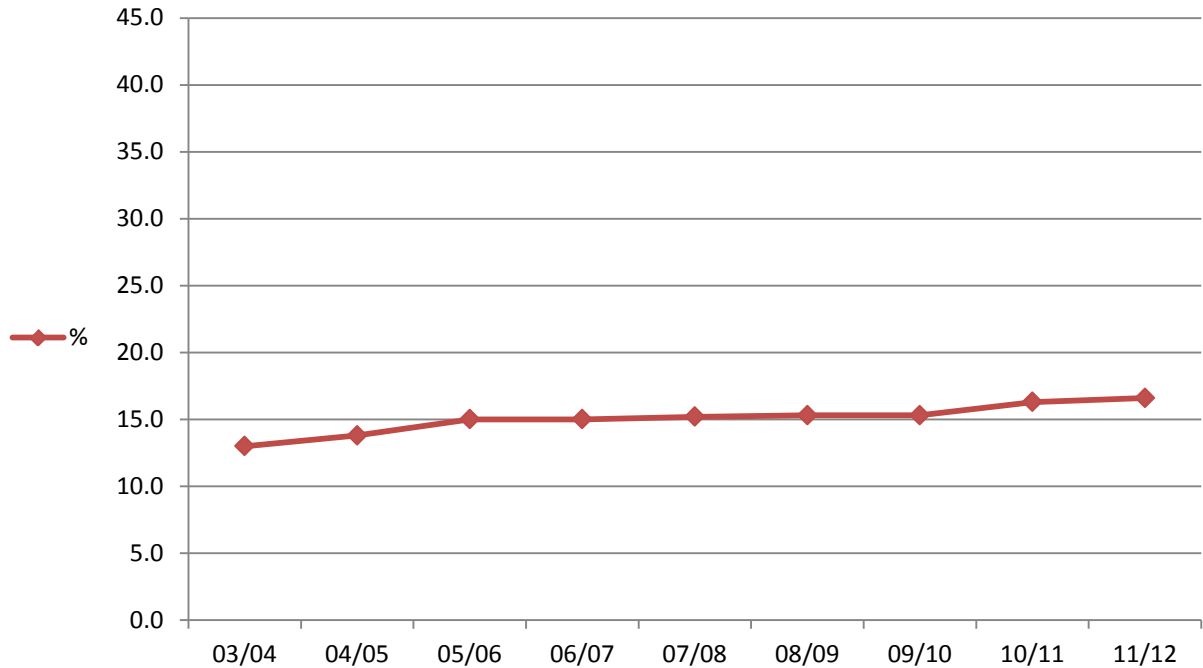
¹ <http://www.env.gov.bc.ca/atrisk/toolintro.html>

² *Conservation covenants for the purposes of these charts are covenants as defined by section 219 of the Land Title Act and must be in a format similar to that described in West Coast Environmental Law's "Greening Your Title: A Guide to Best Practices for Conservation Covenants, 2nd edition" available at www.wcel.org.*

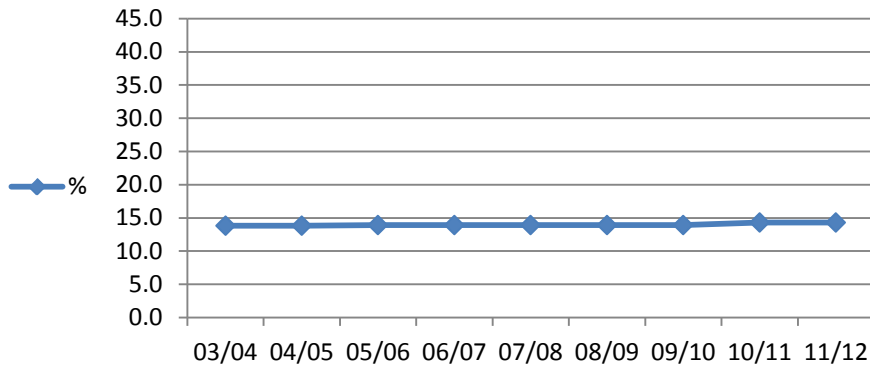
Protected Area 2003/04 - 2011/12



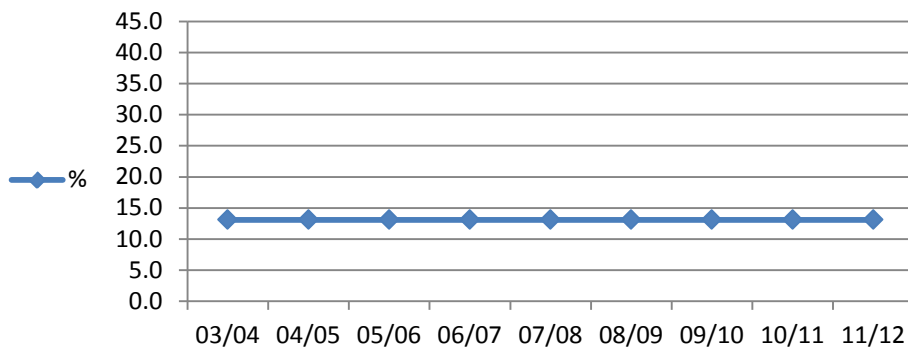
Islands Trust Area Protected Area



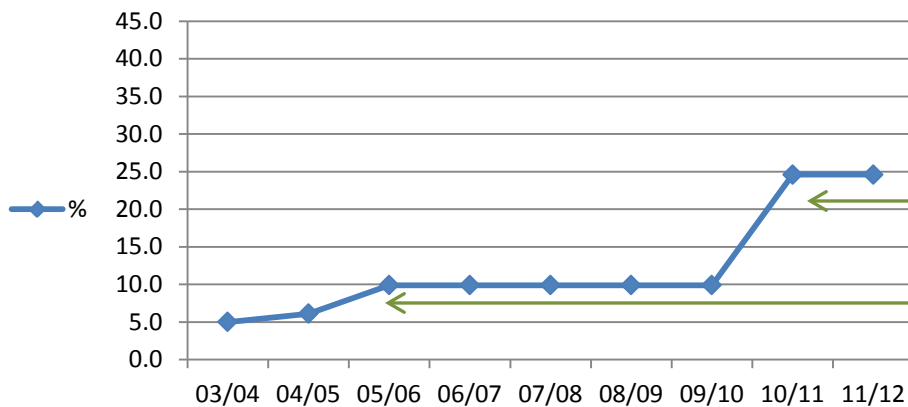
Bowen Island Municipality Protected Area



Executive Islands (Ballenas-Winchelsea) Local Trust Area Protected Area



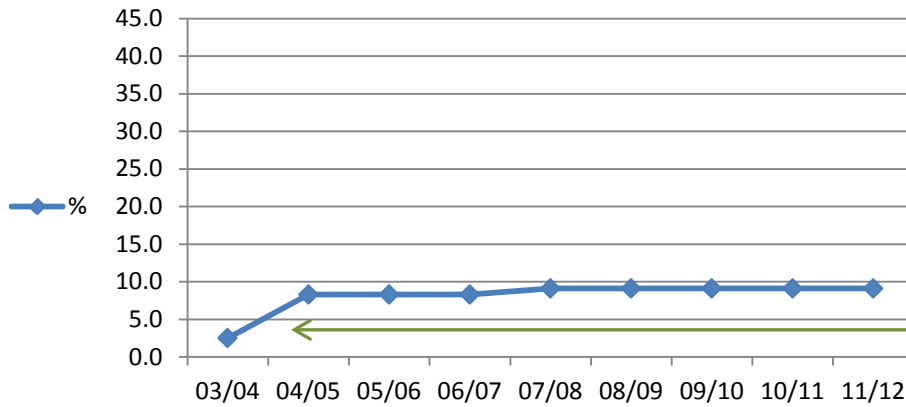
Denman Island Local Trust Area Protected Area



Provincial park acquisition and covenants through LTC approved density transfer and rezoning

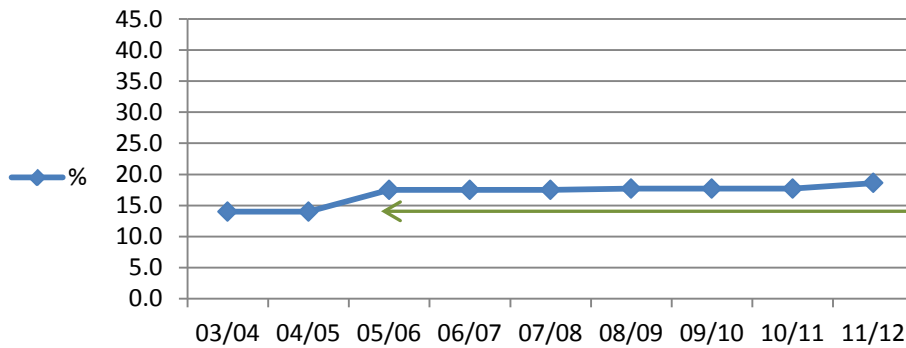
Denman Conservancy Settlement Lands and covenants and donation of land to Islands Trust Fund through Sec. 99 subdivision

Gabriola Island Local Trust Area Protected Area



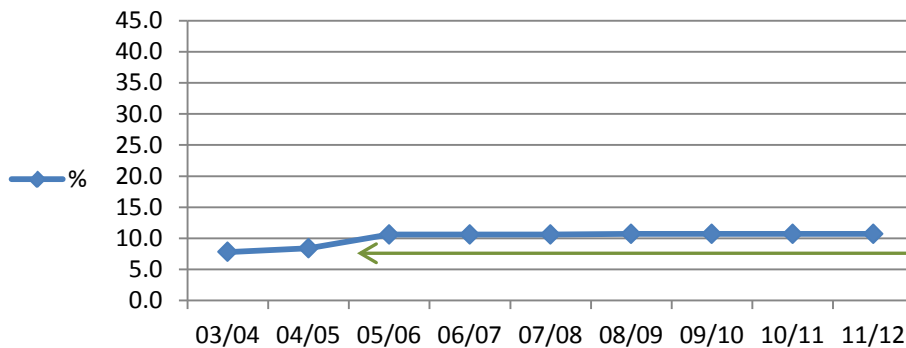
- 1) Free Crown Grant transfer to Islands Trust Fund
- 2) Regional park acquisition by referendum
- 3) Community park acquisition by Islands Trust approved density transfer rezoning

Galiano Island Local Trust Area Protected Area



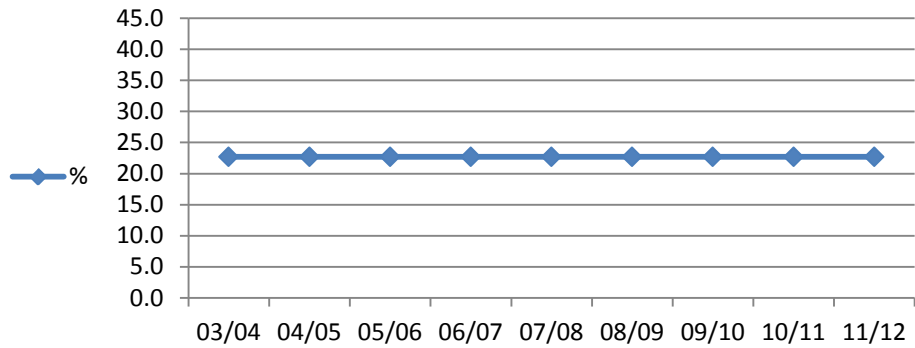
Provincial and regional park acquisitions, Heritage Forest and covenants on private land

Gambier Island Local Trust Area Protected Area

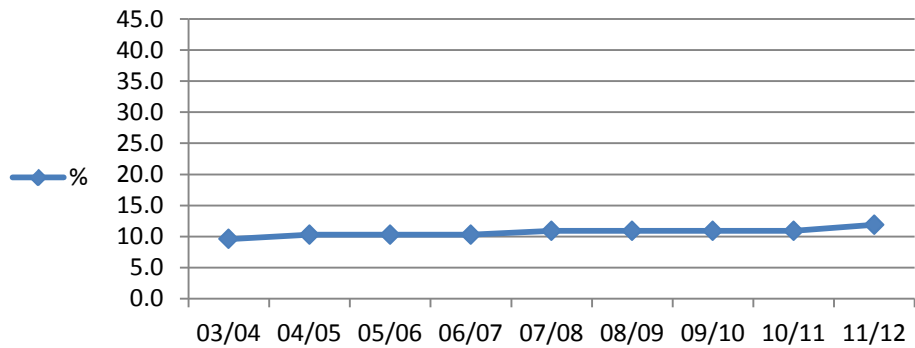


Free Crown Grant to Islands Trust Fund and community park

Hornby Island Local Trust Area Protected Area

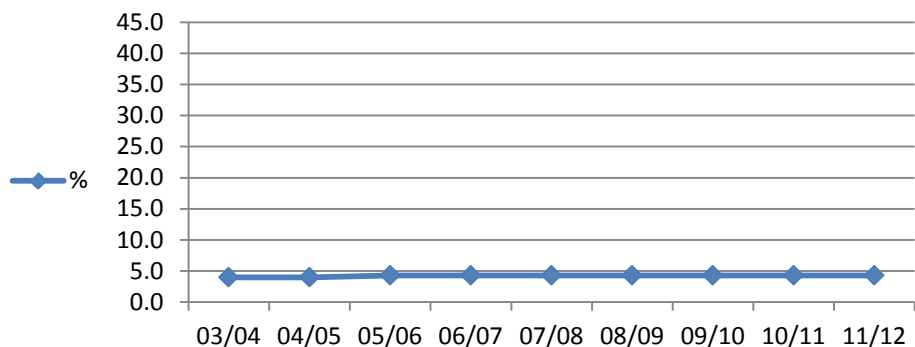


Lasqueti Island Local Trust Area Protected Area

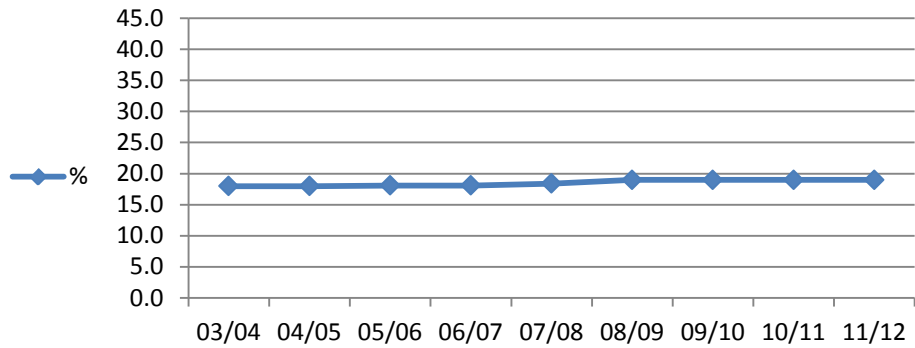


Two land donations to Islands Trust Fund and the expansion of Squitty Bay Provincial Park (supported by cash donations to the Islands Trust Fund)

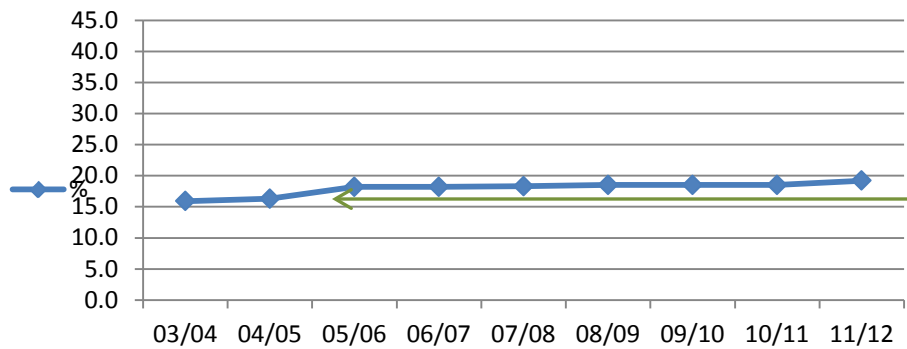
Mayne Island Local Trust Area Protected Area



North Pender Island Local Trust Area Protected Area

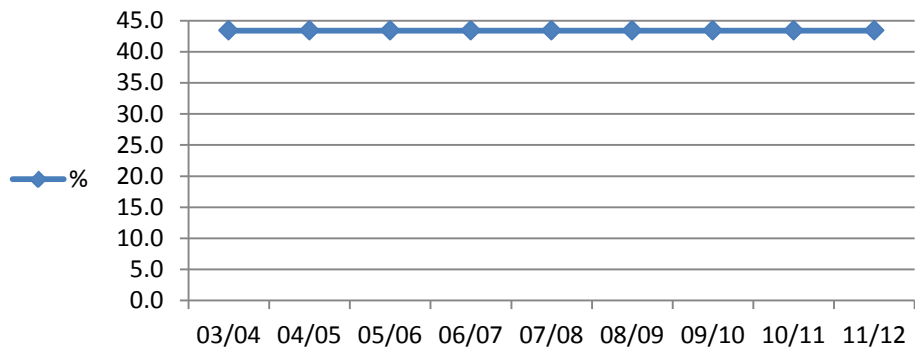


Salt Spring Island Local Trust Area Protected Area

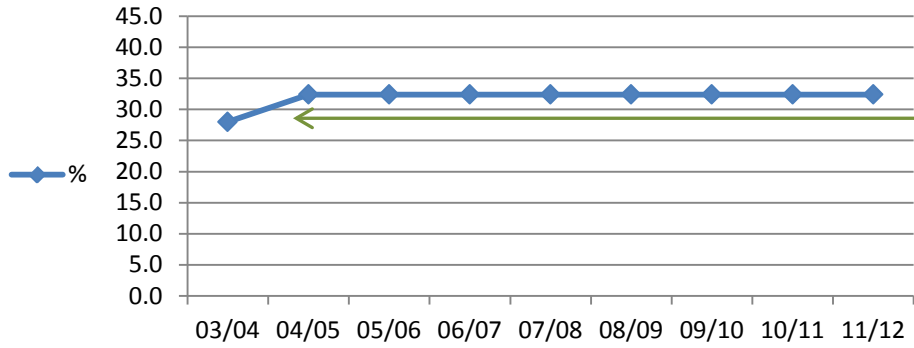


Mount Erskine Summit acquisition and four Natural Area Protection Tax Exemption Program (NAPTEP) covenants

Saturna Island Local Trust Area Protected Area

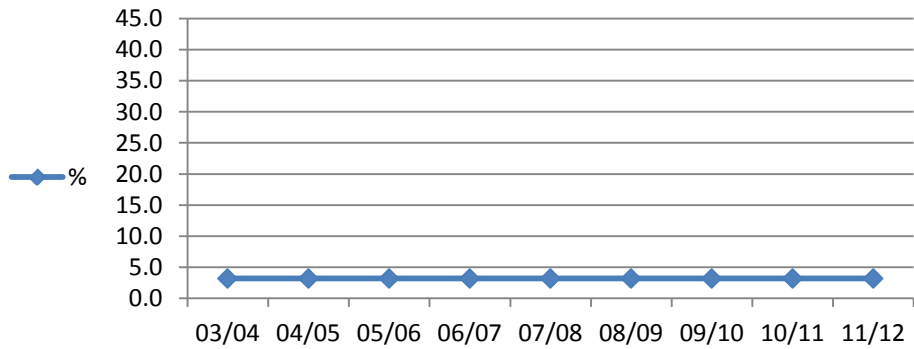


South Pender Island Local Trust Area Protected Area



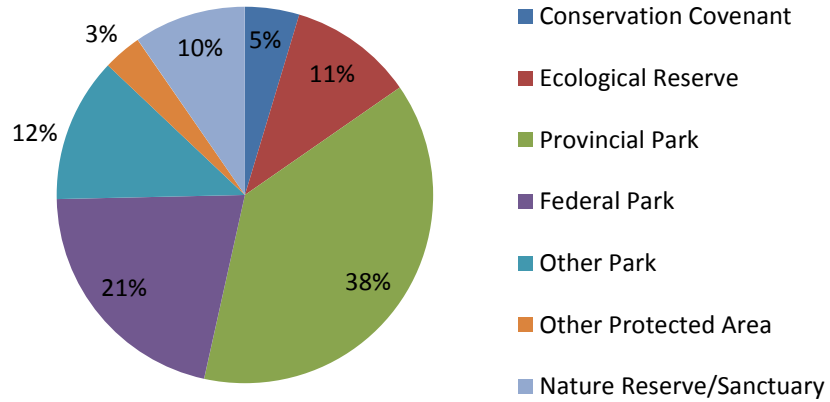
Gulf Islands
National Park
Reserve acquisition

Thetis Island Local Trust Area Protected Area

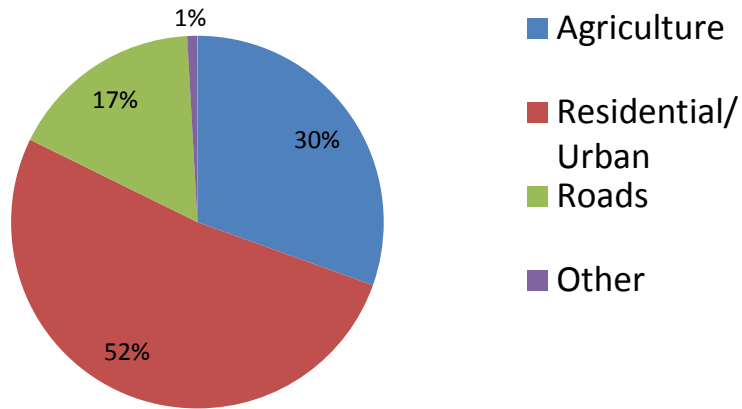


Islands Trust Area land base types:

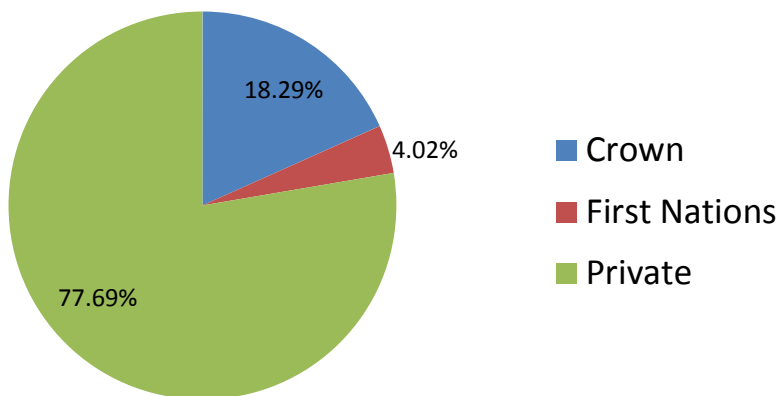
Protected Land– 16.3 Percent (2012)



Converted Land – 15.4 Percent (2010)



Unprotected unconverted land – 68.3 Percent (2012)



Long-term protected area goals and priorities:

The Islands Trust Fund's 2011-2015 Regional Conservation Plan includes the long-term goal of securing core conservation areas that effectively conserve biodiversity priorities within the Islands Trust Area and within individual local trust areas or island municipalities. This goal is supported by the following 5-year objectives:*

1. Based on the biodiversity priorities (below), identify 3,000 hectares of priority lands for conservation within the Islands Trust Area.
2. Develop a strategic plan for the creation of core conservation areas that protect biodiversity priorities, including a proposed budget/financing plan.
3. Implement the recommendations of the core conservation area strategic plan, including acquiring sufficient funding, with the aim of securing, through acquisition, bequest, donation or conservation covenant, at least 500 hectares within the timeframe of the 2011-2015 Regional Conservation Plan.
4. Because Thetis Island has no publicly accessible natural spaces, work with partner organizations to acquire at least 20 hectares of publicly accessible natural park or nature reserve on Thetis Island.
5. Assist other organizations with efforts to protect lands in the Islands Trust Area that protect the biodiversity priorities identified in the 2011-2015 Regional Conservation Plan.

Islands Trust Fund priorities for Biodiversity protection in the Islands Trust Area include:

- **Sensitive ecosystems**, including woodlands, mature and old forests, riparian areas, bodies of freshwater, wetlands, cliffs and herbaceous ecosystems
- **Representative ecosystems**, including healthy forests of various ages
- **“At risk” species and ecosystems** as listed by the B.C. Conservation Data Centre
- **Areas that provide connectivity and buffers** for biodiversity priorities and existing protected areas
- **Nearshore zone areas** considered important for the function and structure of the marine environment, including the marine riparian area
- **Islets and small islands** that act as refuges for species at risk assemblages and provide isolation from common threats to biodiversity

* Land is secured through direct purchase, land donation, bequests, conservation covenant (including through the Natural Area Protection Tax Exemption Program) or through the granting of a Life Estate. Land securement is intended to be a permanent protection of land. The Islands Trust Fund does not acquire land through expropriation.