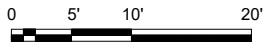
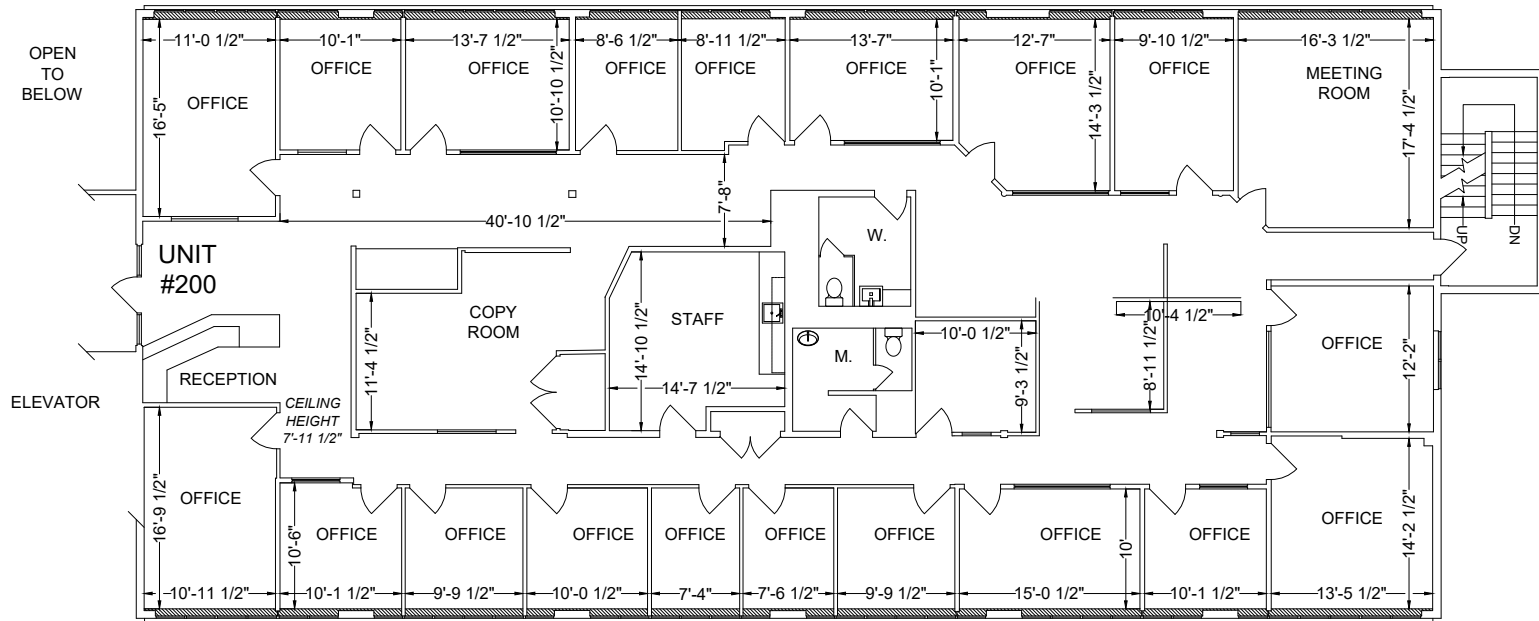


# #200-1627 FORT ST, VICTORIA BC



MEASURED NOV 2017

PREPARED FOR  
 ISLANDS TRUST  
 VICTORIA OFFICE  
 200 1627 FORT STREET  
 VICTORIA BC V8R 1H8

#200-1627 FORT ST  
 VICTORIA, BC

FLOOR PLAN

16 NOV 2017

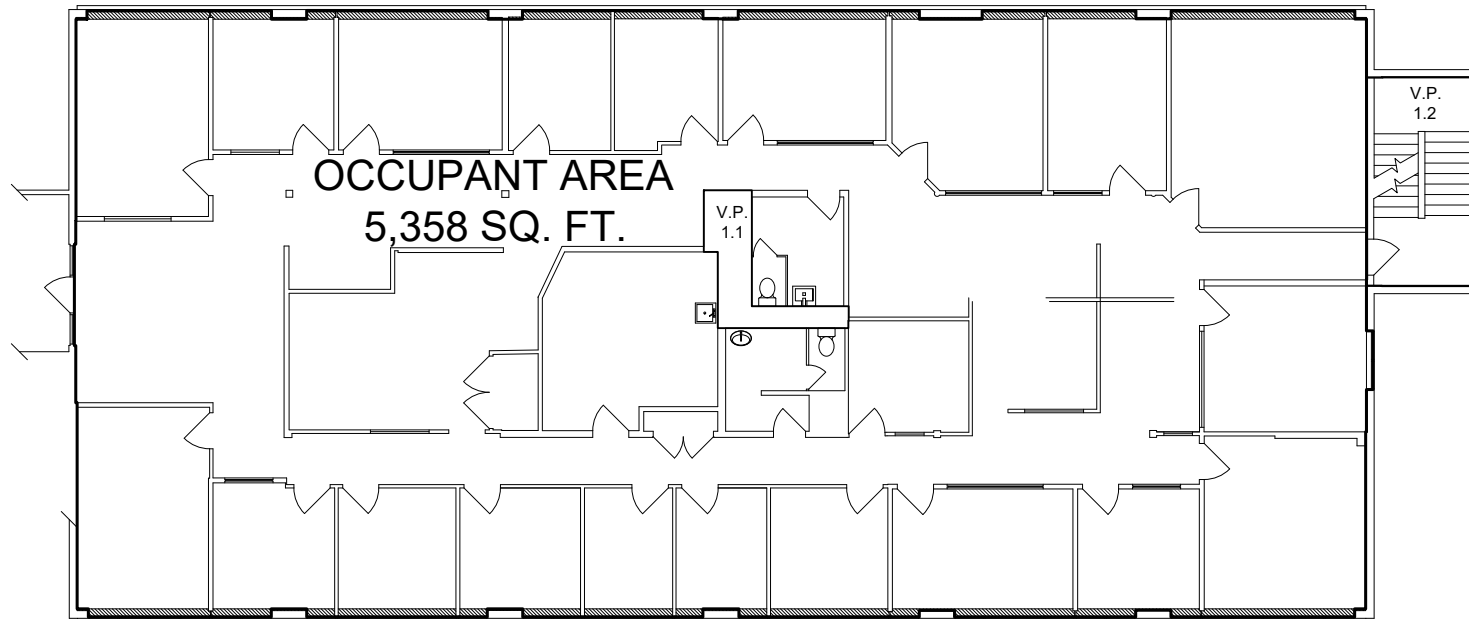
17-2393

1/16" = 1'0"



MEASURE MASTERS  
 VANCOUVER ISLAND -  
 COMMERCIAL  
 TEL 604 433 5646  
 MMVIC.CA

# #200-1627 FORT ST, VICTORIA BC



AREA DETERMINED IN  
ACCORDANCE WITH  
*OFFICE BUILDINGS: STANDARD  
METHODS OF MEASUREMENT  
(ANSI/BOMA Z65.1-2010) METHOD A*

MEASURED NOV 2017

PREPARED FOR  
ISLANDS TRUST  
VICTORIA OFFICE  
200 1627 FORT STREET  
VICTORIA BC V8R 1H8

#200-1627 FORT ST

VICTORIA, BC

FLOOR PLAN

16 NOV 2017

17-2393

1/16" = 1'0"



MEASURE MASTERS  
VANCOUVER ISLAND -  
COMMERCIAL  
TEL 604 433 5646  
MMVIC.CA