

Bylaws & Zoning Regulations

We're here to help: Learn about your local bylaws and zoning regulations, before you make your plans.

In the Islands Trust Area, permitting may be required for new builds, renovations, tree removal or home-based business development.

Contact Islands Trust to learn about the zoning bylaws that can affect your plans to use and develop your property.

First Nations

The Islands Trust Area is within treaty and territorial lands and waters of many First Nation governments, which may have their own permitting requirements related to land use. Engagement with First Nations may be required. Islands Trust land use decision-making is moving towards greater protection of cultural heritage and sites, ancestral resting places, and culturally significant areas.

Many of the island regulations reflect community values and are in place to protect the region's unique environment and cultural heritage.

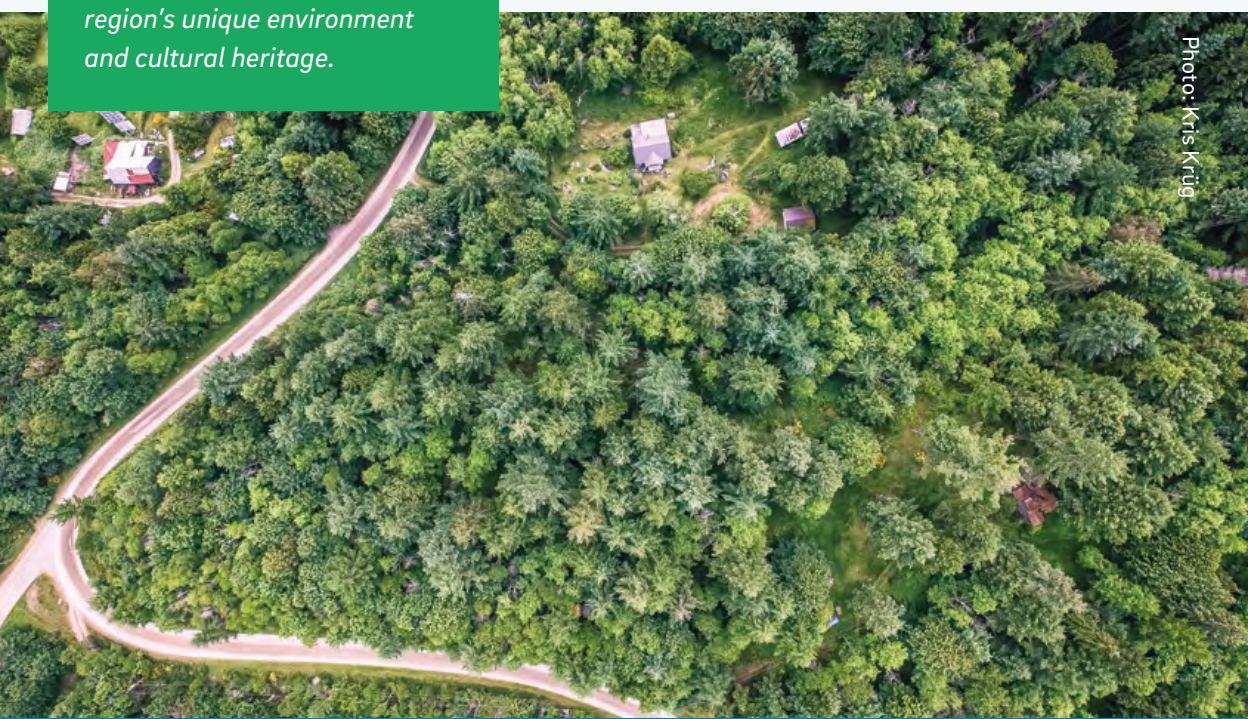


Photo: Kris Krüg

Calls can be made to Islands Trust toll-free via Service BC:

In Vancouver: 604-660-2421

Elsewhere in BC: 1-800-663-7867

Ballenas-Winchelsea Island Local Trust Area

📞 250-247-2063

✉ northinfo@islandstrust.bc.ca



📱 SCAN ME



Preserving and protecting over 450 islands and surrounding waters in the Salish Sea

islandstrust.bc.ca