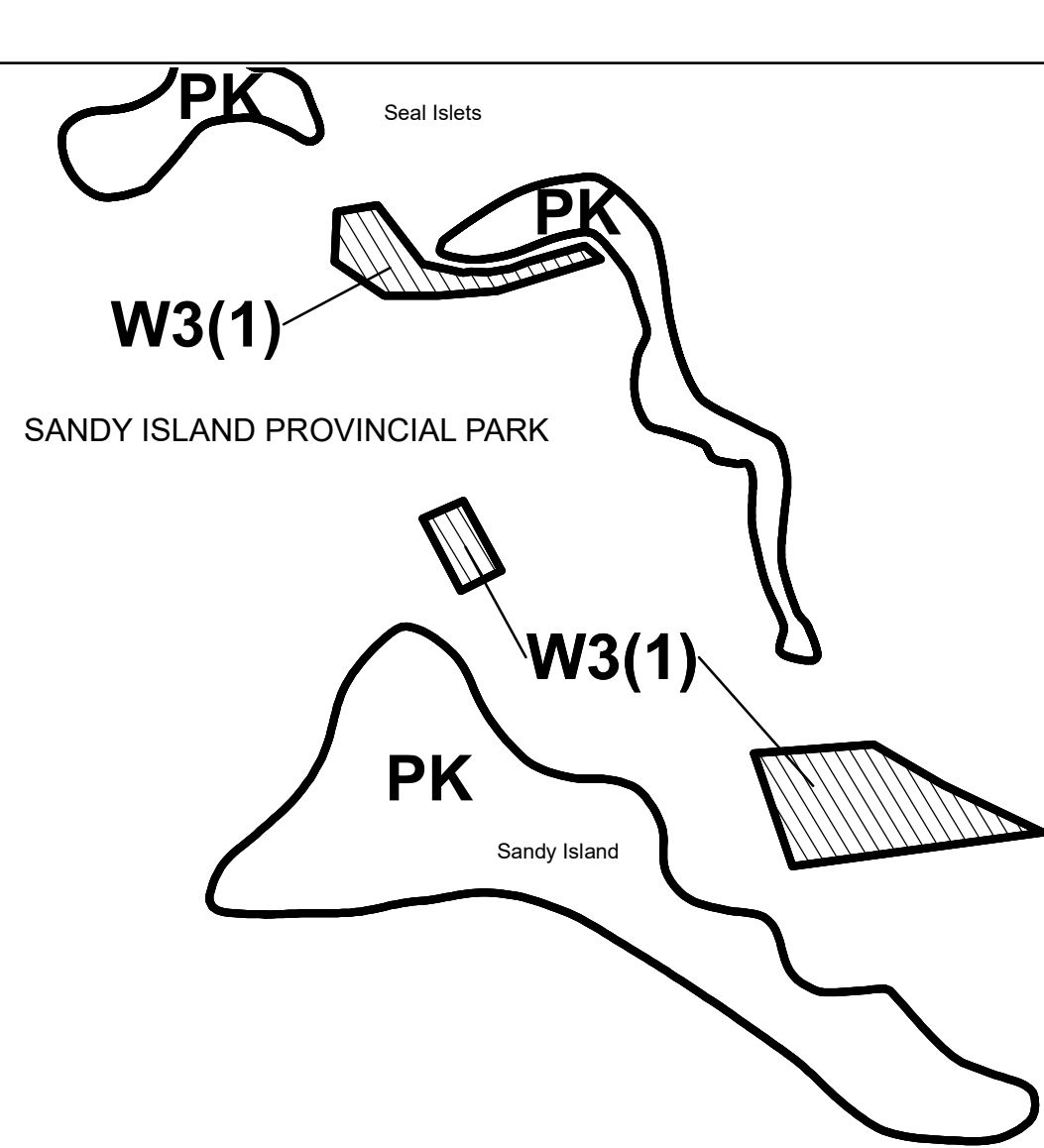


SEE INSET C BELOW FOR AREA TO THE NORTH



DENMAN ISLAND LAND USE BYLAW

Bylaw #186 SCHEDULE B - NORTH MAP

- RESIDENTIAL ZONES**
- R1 Residential
 - R2 Rural Residential
 - R3 Community Housing
 - R4 Affordable Rental Housing

- RESOURCE ZONES**
- A Agriculture
 - F Forestry
 - RE Resource

- COMMERCIAL AND LIGHT INDUSTRIAL ZONES**
- C Commercial
 - L Light Industrial

- COMMUNITY ZONES**
- IN Institutional
 - CN Conservation
 - PK Park

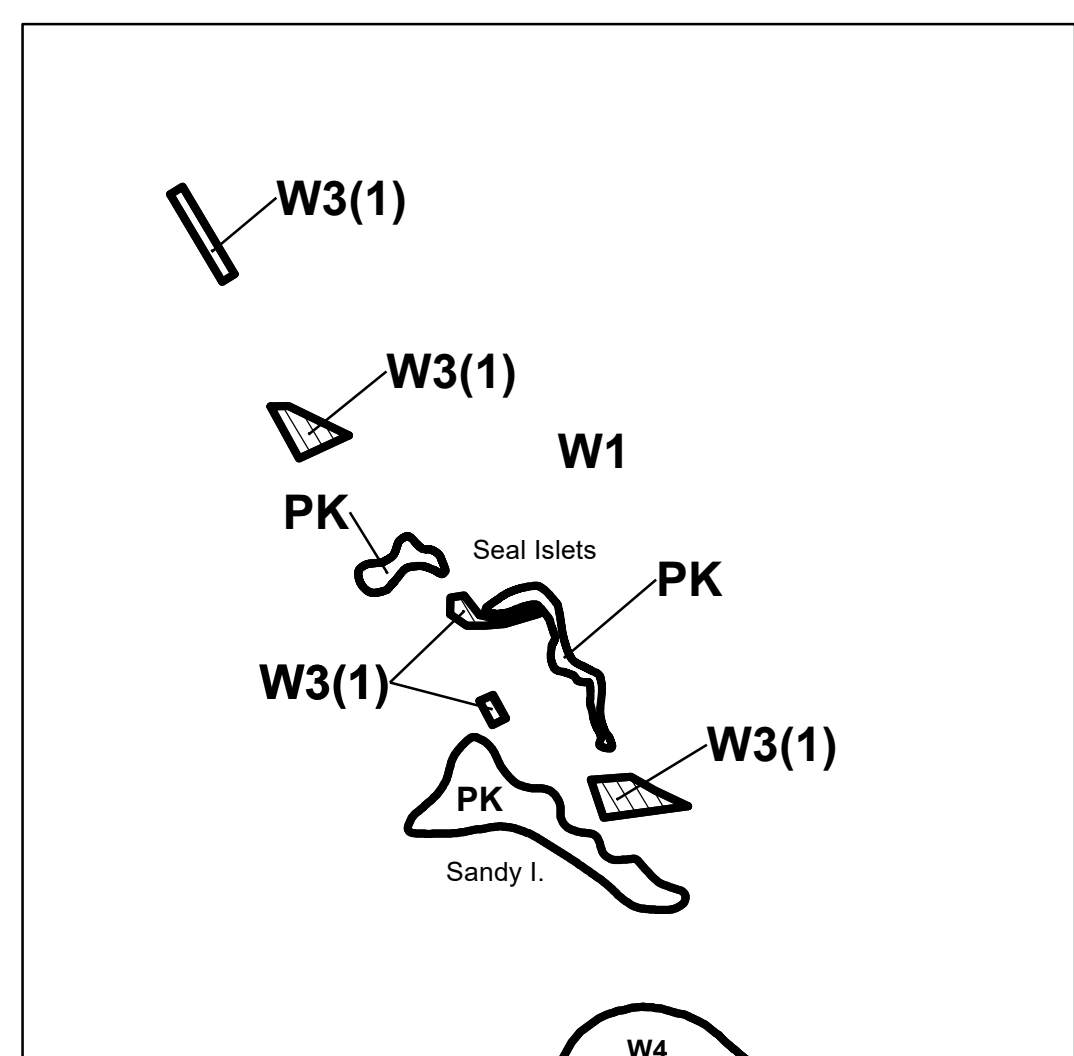
- WATER ZONES**
- W1 Marine Conservation
 - W2 Marine Services
 - W3 Aquaculture
 - W4 Marine Protection
 - W5 Lakes

Agricultural Land Reserve

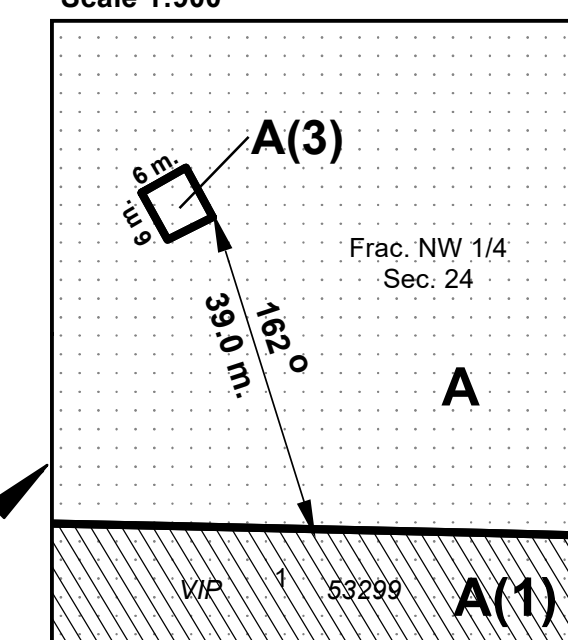
SITE SPECIFIC

- Site Specific Zoning
These regulations apply where the zoning code is followed by a number in parentheses, for example R1(2)
- Land Use Contract #267

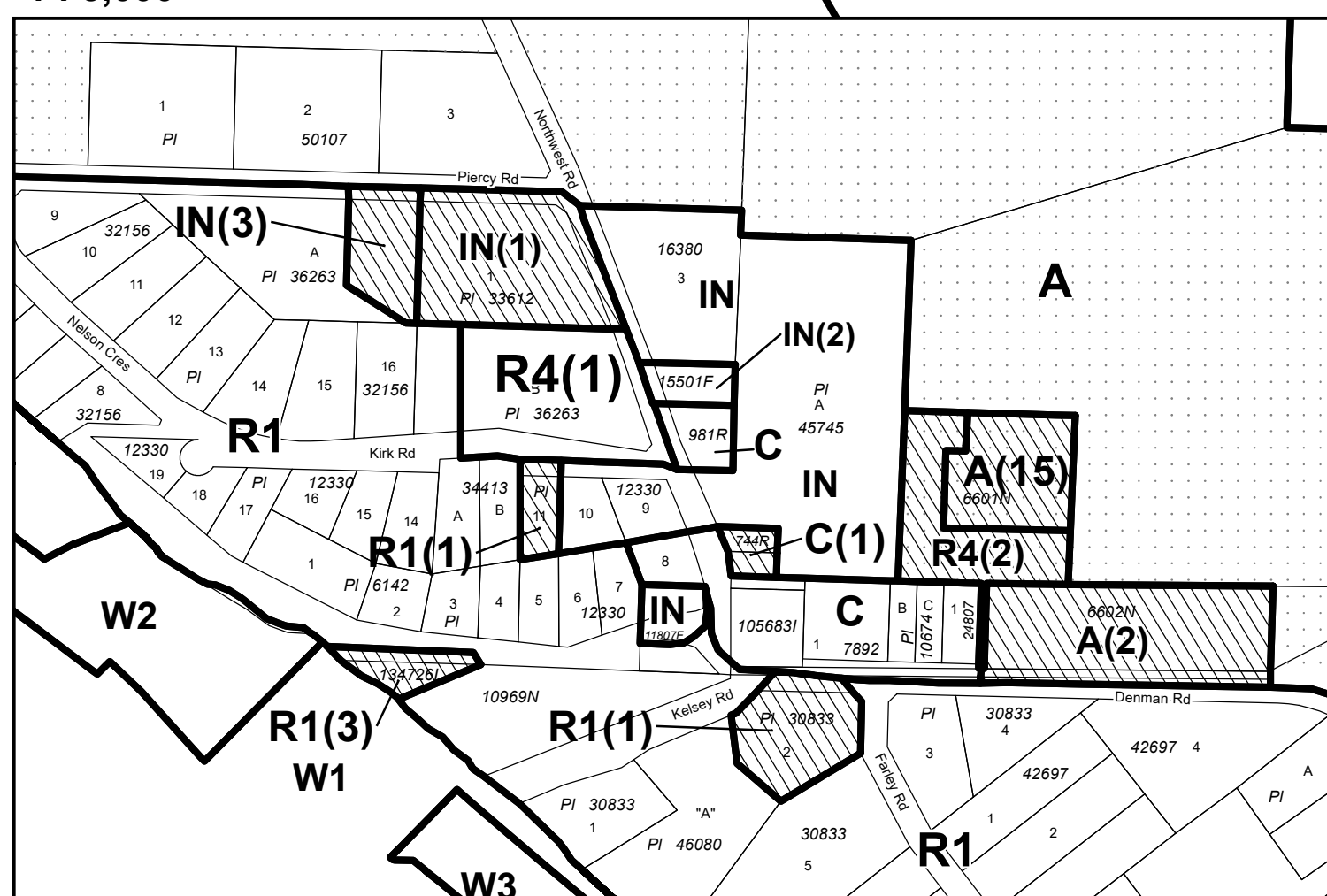
INSET C
1 : 30,000



INSET B
Scale 1:500



INSET A - DENMAN VILLAGE
1 : 5,000



BYLAW AMENDMENTS	
Bylaw 190	April 2010
Bylaw 192	May 2010
Bylaw 194	Aug 2010
Bylaw 197	Aug 2010
Bylaw 200	Aug 2011
Bylaw 204	Sept 2013
Bylaw 234	Sept 2022
Bylaw 242	Feb 2023

Note: This map is a consolidation of any bylaw amendments and is presented for convenience only. This map is not to be construed as a legal document. Certified copies of the bylaw, 166 and subsequent bylaw amendments are available from the Islands Trust, 6200 - 1627 Fort Street, Victoria, BC, V8R 1H8