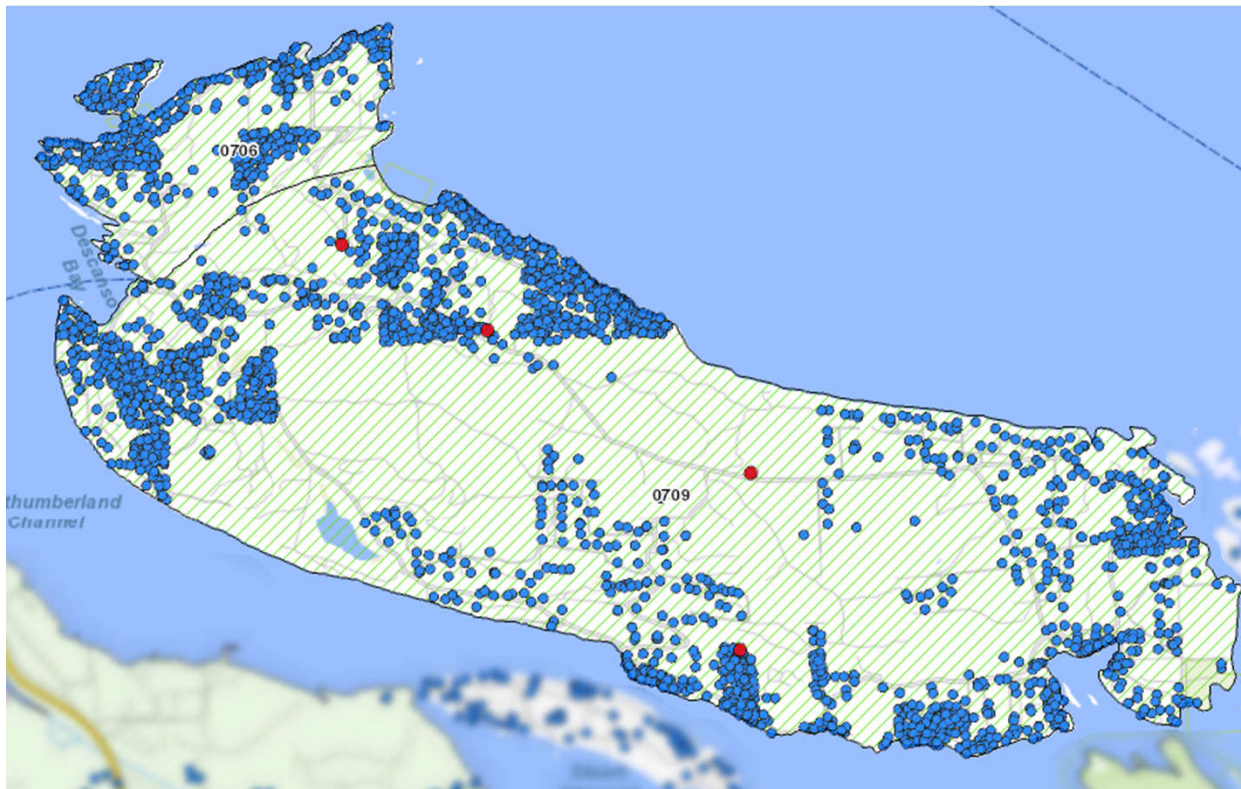


Gabriola - Overview



Overview:

- 2 mapped aquifers
- Both fractured bedrock
- Low Productivity
- Mod-High Development
- High Vulnerability
- ~ 300 registered wells
- Mean depth ~ 220 ft
- Mean yield ~8.5 USGPM
- 2 Observation wells

Potential Challenges

- Saltwater Intrusion
- Low Yields
- Sulfur taste & odour

Image Sourced from iMapBC:

<http://maps.gov.bc.ca/ess/sv/imapbc>