

Gabriola Visioning 2023 Community Engagement

Presented by Narissa Chadwick RPP, Island Planner



Islands Trust



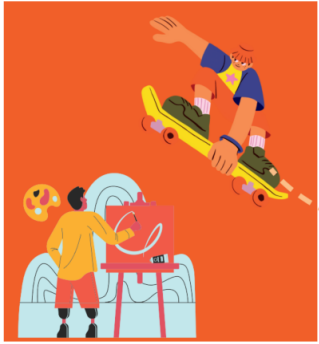
The Gabriola Visioning 2050 process has provided the opportunity for residents to discuss and share interests and values contributing to a future vision for Gabriola Island.

Since October 2023 over 600 residents have been engaged in the process through:

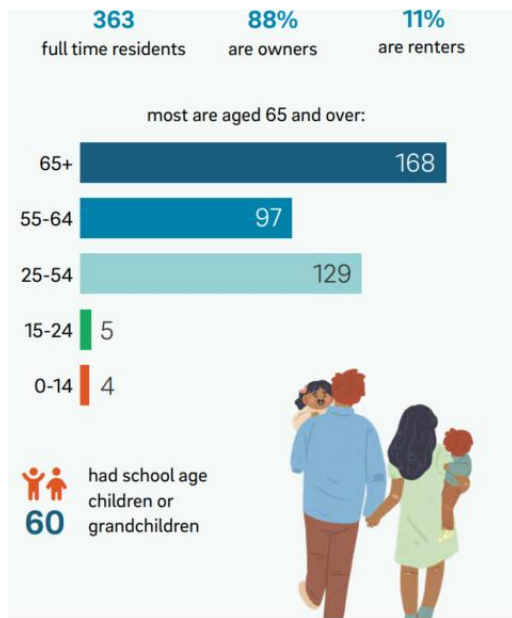
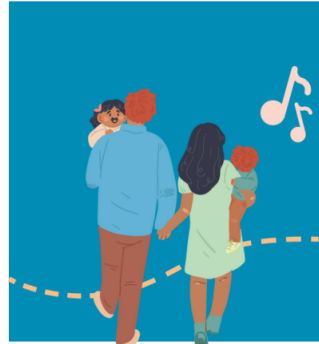
- Survey
- Community Led Engagement
- Direct letters to the LTC



Islands Trust



GABRIOLA VISIONING 2050



- Community Led Engagement
- Farm Table Talk
- Gabriola HAPC
- Gabriola Fibershed Working Group
- Gabriola Arts Council
- Gabriola Land and Trails Trust
- GROWLS
- Gabriola Memorial Society
- Gabriola Island Land Stewards Society
- Gabriola Island Shore Keepers Association
- Youth at Gabriola Elementary
- Youth at Skate Park
- Mutual Aid Group
- Gabriola Climate 12-12-12
- Roamsted
- Small Group Meeting

Why are we here?

- Share key **values** and related **goals** emerging from the survey and group feedback
- Gather feedback on **values** emerging from the feedback
- Identify **gaps** related to **goals** emerging from the feedback
- Identify next steps for the OCP review
- Provide opportunity for discussion of next steps for feedback not related to the OCP review
- Celebrate where we have come in this process



Agenda for Presentation

- How does Gabriola Visioning 2050 connect to the OCP Review?
- What is an OCP ?

- What values have emerged from the feedback?
- How will values, goals and other feedback inform the OCP review?

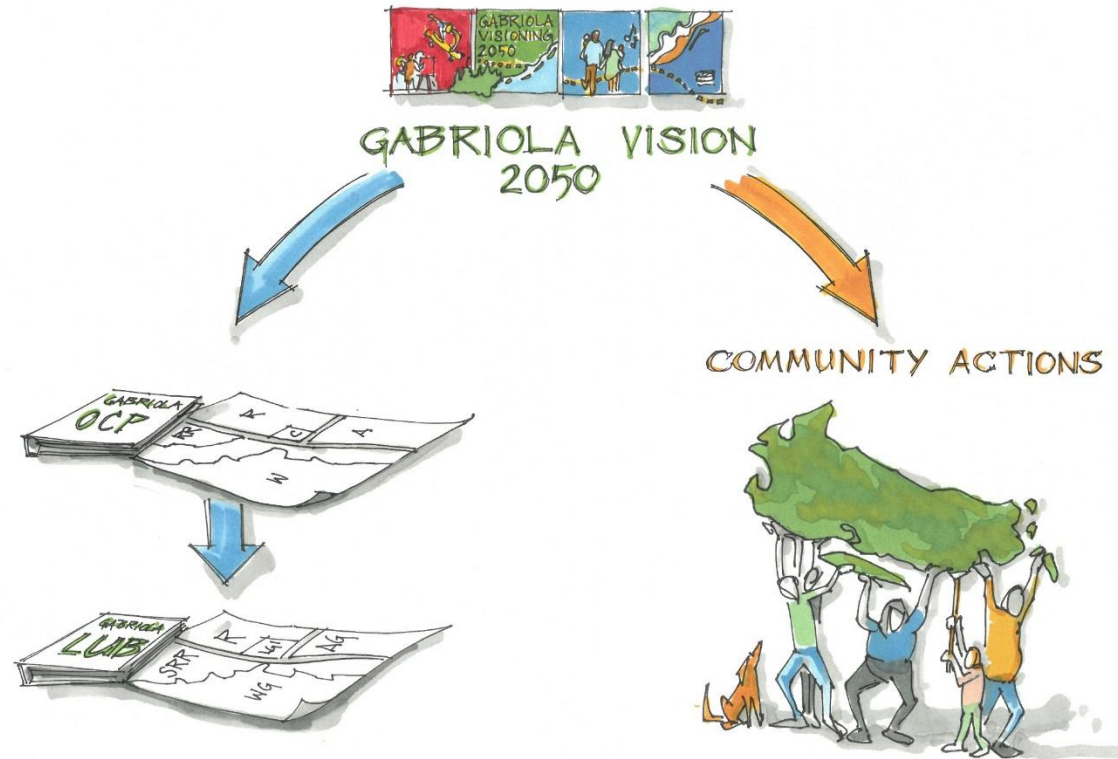
- What are we discussing as a group and how?



Gabriola Visioning 2050 has helped identify values and goals:

To inform updates to Official Community Plan (OCP) Policies and Land Use Bylaw (LUB) Regulations that inform how land on Gabriola can be used.

This is the work of your Local Trust Committee (LTC) and Islands Trust Staff (what we are elected and paid to do).



Defining community interests related to inclusivity, social equity and wellbeing, education and collective action.

This is the work of community led organizations independently, and in cooperation with the LTC and other levels of government.



Islands Trust

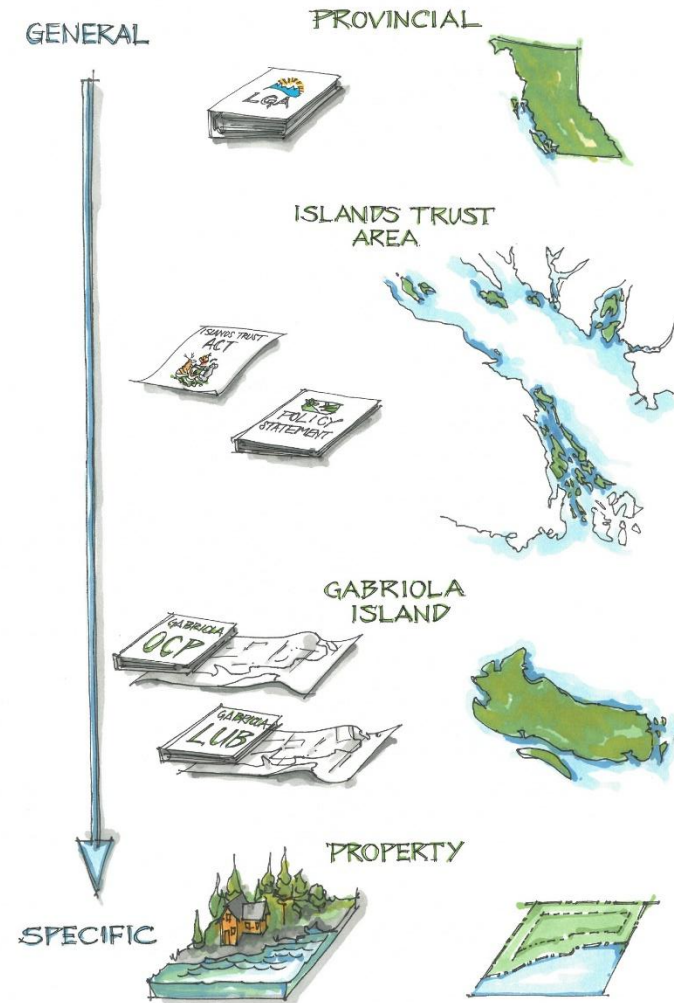
What is an Official Community Plan and Land Use Bylaw?

Local governments are provided authority through the Provincial *Local Government Act* to develop OCPs and LUBs.

In the Islands Trust Area all OCP policies must conform to the *Islands Trust Policy Statement*.

An *Official Community Plan* is a statement of objectives and policies to guide decisions on planning and land use management, within the area covered by the plan, respecting the purposes of local government. Islands Trust is a special purpose local government.

A *Land Use Bylaw* is a set of regulations that implement the policies in an OCP.



Islands Trust

OCP Objective Policy and LUB Examples

OCP Objective:

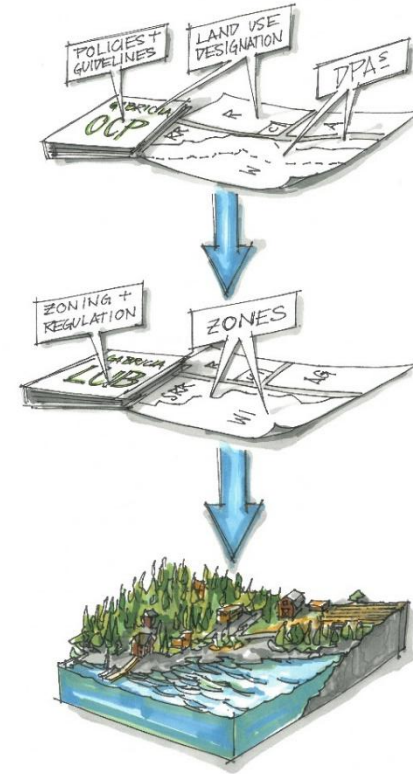
To ensure that all land uses are based on the sustainability of the natural systems of the island.

OCP Policy :

Development shall be designed to protect water recharge areas.

Related LUB Regulations:

- *The maximum lot coverage is XX%*
- *The maximum number of accessory buildings is X*
- *Only one dwelling per lot is permitted on lots less than XX*
- *Maximum floor are of all dwelling is XX*
- *Development must be clustered*



How do values and goals inform OCP Policies and Land Use?

Values represent what is important to the community. Values serve as a foundation for goal setting.

Goals represent desired results. They help focus policies, regulations, and actions.

Objectives provide a target for policies, regulations and action.

Policies outline intended actions required to reach a goal.

Regulations are rules designed to achieve a policy objective.



Environmental Sustainability



Ecosystems on Gabriola Island are protected, preserved and restored



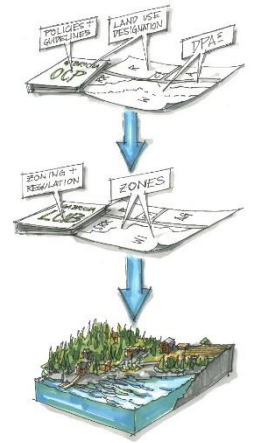
OCP -To ensure that all land uses are based on the sustainability of the natural systems of the island.



OCP -Development shall be designed to protect water recharge areas.



LUB – Lot coverage/building size maximums, limitations on number of building, lot/building clustering requirements



Values and Related Goals: What We Heard

- Environmental Stewardship
 - Environmental Sustainability
-
- Inclusive Public Space
 - Housing Diversity
 - Improved Infrastructure
-
- Community Engagement and Inclusivity
 - Social Equity and Wellbeing
 - Education and Awareness
 - Collaboration, Collective Action and Advocacy
-

Natural Environment

Built Environment

Community

Hopes and Dreams

nature rural
access environment beauty island
peaceful/peace trails quiet
community

Values

natural rural
peaceful environment
community
affordable green
sustainable
preserved/protection inclusive



Islands Trust

Next Steps

30 min – Walk around familiarize and discuss values and goals (what’s missing?)

30 min – Discussion at tables vision, goals and priorities (switch at half time)

20min – Report out by groups

10min – Vision Reveal/ Youth Reflections/ Next Steps for OCP Process



Islands Trust

What is Not Being Discussed at this time?

- Specific Policies
- Specific Advocacy
- Specific Actions and Activities

When will these things be discussed?

- The OCP Engagement Process will provide opportunities for land –use policies to be discussed (all feedback collected to date will be considered)
- Community Led processes can focus on community related actions and activities

What Do You Do If You Have an Idea You Don't Want to Loose?

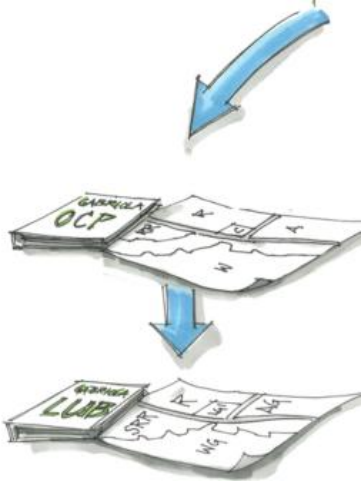
- Park It (see park it poster)



Discussing Values and Related Goals –Land Use Policy Focus

Do you agree with this value to inform the OCP and LUB updates?

What goals are missing?

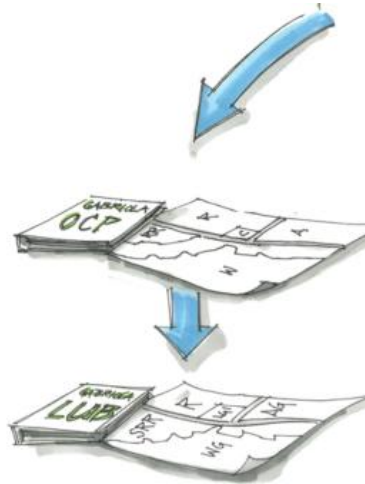


VALUE: ENVIRONMENTAL STEWARDSHIP AND SUSTAINABILITY	Most Appropriate Jurisdiction/Body to Address Actions			
Related Goals	LTC/OCP/LUB	Trust Council	Other Govt	Community
Marine and terrestrial ecosystems on Gabriola Island are protected, preserved and restored	Blue	Light Blue	Grey	Yellow
Greenhouse gas emissions are reduced	Blue	Light Blue	Grey	Yellow
Water conservation measures are implemented	Blue	Light Blue	Grey	Yellow
Ecological impact are considered when making development decisions	Blue	Light Blue	Grey	White
Impacts to water availability are considered when making land use decisions	Blue	Light Blue	Grey	Yellow
Biodiversity is protected	Blue	Light Blue	Grey	Yellow
Wildfire resilience is prioritized	Blue	Light Blue	Grey	Yellow
Agricultural land is protected and regenerative agricultural practices are supported	Blue	Light Blue	Grey	Yellow
Connections between ecosystems, culture, and the arts are fostered	Blue	Light Blue	Grey	Yellow
Realistic and measurable targets for environmental policies and actions are established	Blue	Light Blue	Grey	White
Indigenous perspectives are incorporated into land use decisions	Blue	White	Grey	White
Critical food lands for Indigenous peoples are protected	Blue	White	White	Yellow
Light pollution is minimized	White	White	Grey	Yellow
Economic activities prioritize environmental stewardship and sustainable land use	White	White	White	Yellow

Discussing Values and Related Goals – Land Use Policy Focus

Do you agree with this value to inform the OCP and LUB updates?

What goals are missing?



Related Values and Goals	LTC/OCP LUB	Trust Council	Other Govt	Comm- unity
Inclusive Public Space				
Community gathering spaces are plentiful, inclusive and accessible	Blue	White	Grey	Yellow
There are a range of recreational facilities for children	Blue	White	Grey	Yellow
Diversity of housing options				
A diversity of housing options are available	Blue	White	Grey	Yellow
Improved Infrastructure				
Biking and walking paths are improve	Blue	White	Grey	Yellow
Roads are improved	White	White	Grey	Yellow
Public transportation options are available	Blue	White	Grey	Yellow



Discussing Values and Related Goals – Community Action Focus

Related Values and Goals				
Community Engagement and Inclusivity	LTC/OCP LUB	Islands Trust	Other Govt	Comm- unity
Decision making is data informed and community driven				
Partnerships with First Nations communities are developed				
Residents are engaged in decision-making processes				
Diverse community needs are recognized and supported				
Access to resources and opportunities are equitable				
Social Equity and Well-being				
Cultural diversity is encouraged and supported				
Accessible and affordable housing options are available				
More food is grown on Gabriola Island				
Vulnerable populations are supported				
Social issues such as healthcare and housing access are effectively addressed				
Artists are provided with space and supported by a variety of programs				
Local businesses thrive				
Emergency communication networks are developed				

Do you agree with these values?

What should be the next steps identifying actions related to actions that will not be part of the OCP/LUB review process? Who should take the lead?



Integral Lenses That Will Also Influence Policy

**Climate Change
Mitigation and
Adaptation**

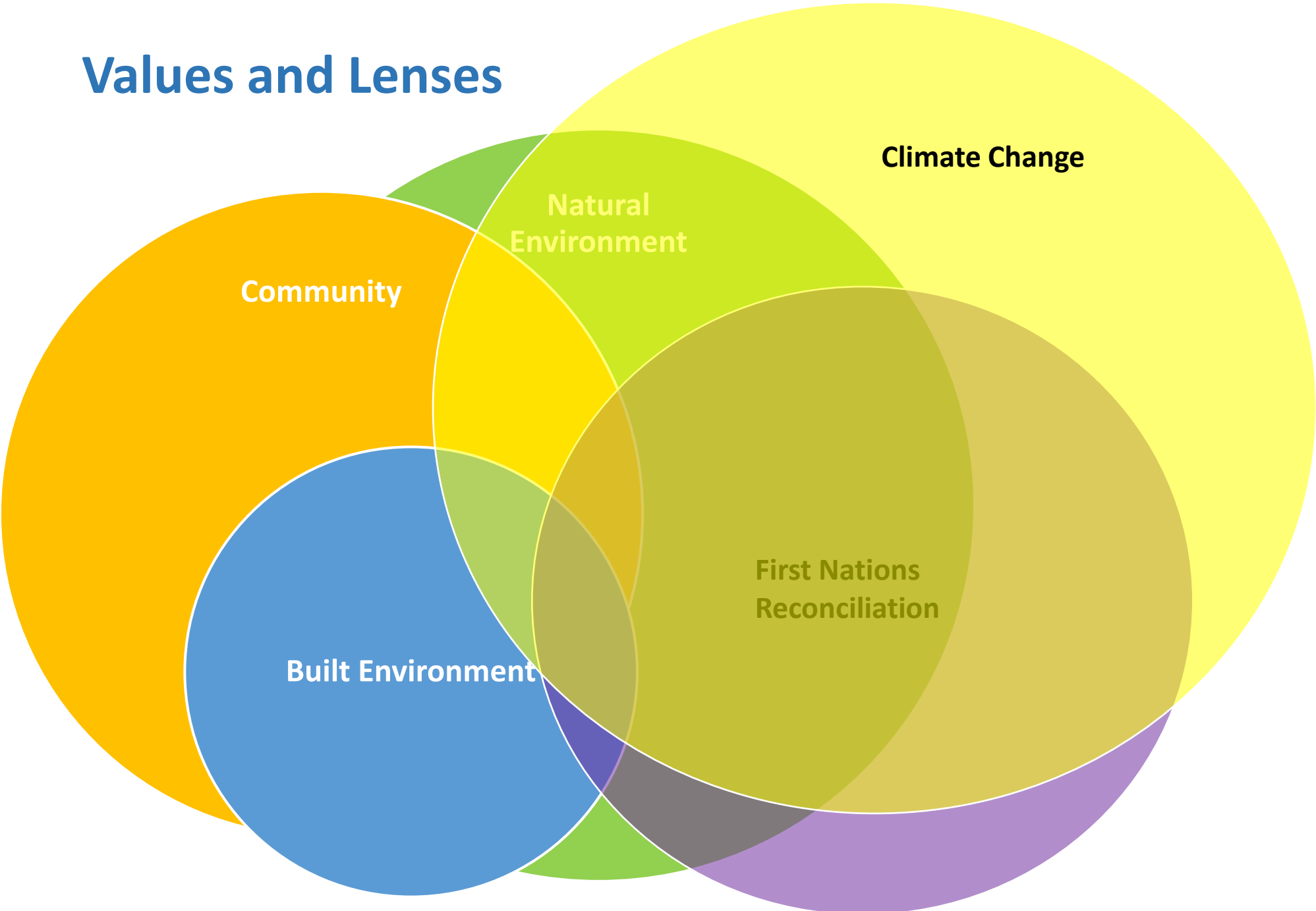
**First Nations
Reconciliation**

- **Islands Trust Priorities**
- **Were identified as important in feedback gathered**
- **Will focus decision making and may narrow options**
- **Trustees and staff are working on a capacity agreement with Snuneymuxw**



Islands Trust

Values and Lenses



Community

Built Environment

Natural Environment

Climate Change

First Nations Reconciliation

GABRIOLA VISION 2050



Islands Trust

Next Steps for Process



Method	Details
Engagement with First Nations	<ul style="list-style-type: none"> Engagement is beginning with Snuneymuxw
Information sharing	<ul style="list-style-type: none"> Creation of Gabriola Visioning 2050 document Drafting of Vision wording Gabriola OCP process information at Gabriola IT office and on website Posts focussed on OCP process
Community meeting #2	<ul style="list-style-type: none"> Presentation of vision and identified priority areas Presentation of process Presentation of suitable land analysis Discussion on priority areas
Online Consultation	<ul style="list-style-type: none"> Depending on community interest in online consultation
Development of Baseline Report	<ul style="list-style-type: none"> Background on community context to inform OCP
Early Referrals	<ul style="list-style-type: none"> Early referrals to agencies
Fall Fair Engagement	<ul style="list-style-type: none"> Seek input on vision/priorities
Working Group Meetings	<ul style="list-style-type: none"> As required beyond APC/HAPC engagement Related to review of draft bylaws
Community Meeting #3	<ul style="list-style-type: none"> Introduction of draft bylaws
Community Meeting #4	<ul style="list-style-type: none"> Review and Discussion of draft bylaws
Public Hearing	<ul style="list-style-type: none"> Final opportunity for community input

