



200 - 1627 Fort Street, Victoria BC V8R 1H8
Telephone **(250) 405-5151** Fax (250) 405-5155
Toll Free via Enquiry BC in Vancouver 604.660.2421.
Elsewhere in BC **1.800.663.7867**
Email information@islandstrust.bc.ca
Web www.islandstrust.bc.ca

January 12, 2018

File No.: 0420-20

via email: CDFOrderAmendment2017@gov.bc.ca

South Island Natural Resource District
Ministry of Forests, Lands, Natural Operations and Rural Development
4885 Cherry Creek Road
Port Alberni BC V9Y 8E9

To whom it may concern:

Re: Protected areas for Coastal Douglas-fir bioclimatic zone

Thank you for the November 3, 2017 letter addressed to Robert Kojima, Regional Planning Manager advising that the Ministry of Forests, Lands, Natural Resource Operations and Rural Development is proposing to establish protected areas for the conservation of the CDF bioclimatic zone (CDFmm) through the protection of 1,125 ha of designated areas under a Land Use Order. We fully support and congratulate you on the proposal. Please see the attached maps, which demonstrate how the designated areas within the Islands Trust Area add significantly to the connectivity of protected spaces that are vital to supporting biodiversity on the islands.

We strongly recommend that the Ministry of Forests, Lands, Natural Resource Operations and Rural Development extend this level of protection to other Crown lands on islands within the South Coast Region, including the Chilliwack and Sunshine Coast Forest Districts. These districts contain important CDF areas that should also be conserved under the Land Use Order. In addition, important CDFmm habitats on large Lasqueti Island Crown land parcels were notably absent and we would be in favour of their inclusion in the Land Use Order.

We also request that the Ministry of Forests, Lands, Natural Resource Operations and Rural Development consider future Land Use Order amendments that would: 1) extend protection to Crown Islets which have important CDF values, and 2) extend protection to lands in the Coastal Western Hemlock xm1 subzone, which have ecosystems that are comparable to the CDF and support many of the same species assemblages and provincially rare ecosystems.

As requested, on December 21, 2017 the Salt Spring Island Local Trust Committee agreed to release its Notation of Interest on Crown Lands file # 0075550, which currently overlaps proposed parcel 235/240 on Salt Spring Island, to allow protection under the Land Use Order.

.../2

We recognize that the Land Use Order amendment is 'without prejudice' to treaty rights and negotiations, and that the lands are still subject to treaty negotiations and that activities such as hunting and traditional harvesting are not precluded. Islands Trust is actively working towards reconciliation with First Nations, therefore, we recommend that the Province fully and meaningfully consult with First Nations on this proposal prior to amending the CDF order.

Thank you for seeking the Islands Trust's input.

Sincerely,



Peter Luckham
Chair, Islands Trust Council
pluckham@islandstrust.bc.ca

Attachments: Salt Spring Island Local Trust Area - Parks and Protected Areas, November 2017
Gabriola Island Local Trust Area - Parks and Protected Areas , November 2017
Galiano Islands Local Trust Area - Parks and Protected Areas , November 2017

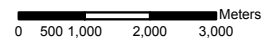
pc: Cowichan Tribes
Esquimalt First Nation
Halalt First Nation
Homalco First Nation
Hul'qumi'num Treaty Group
K'omoks First Nation
Klahoose First Nation
Laich-kwil-tach Treaty Society
Lake Cowichan First Nation
Lyackson First Nation
Malahat Nation
Musqueam First Nation
Nanwakolas Council
Pauquachin First Nation
Penelakut Tribe
Qualicum First Nation
Scia'new (Beecher Bay) First Nation
Semiahmoo First Nation
Shíshálh (Sechelt) First Nation
Snaw-naw-as (Nanoose) First Nation
Snuneymuxw (Nanaimo) First Nation
Songhees First Nation
Squamish First Nation
Stz'uminus (Chemainus) First Nation
Te'mexw Treaty Association
Tla'amin (Sliammon) First Nation
T'Sou-ke (Sooke) First Nation
Tsartlip First Nation
Tsawout First Nation
Tsawwassen First Nation
Tseil-Waututh (Burrard Inlet) First Nation
Tseycum First Nation
We Wai Kai (Cape Mudge First Nation)
Wei Wai Kum (Campbell River First Nation)
Bowen Island Municipal Council
Islands Trust Council
Islands Trust website

Salt Spring Island

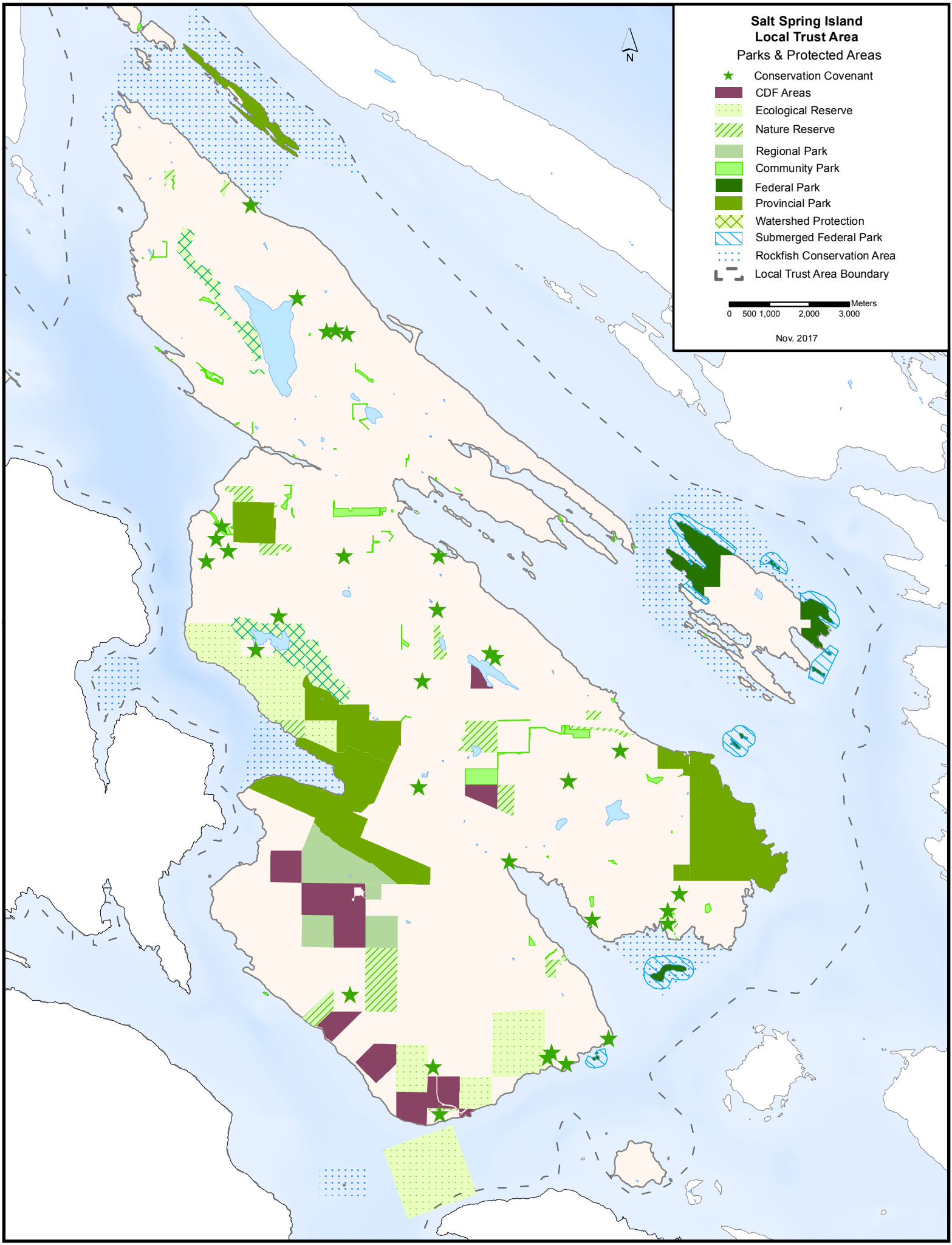
Local Trust Area

Parks & Protected Areas

- ★ Conservation Covenant
- CDF Areas
- Ecological Reserve
- Nature Reserve
- Regional Park
- Community Park
- Federal Park
- Provincial Park
- Watershed Protection
- Submerged Federal Park
- Rockfish Conservation Area
- Local Trust Area Boundary



Nov. 2017



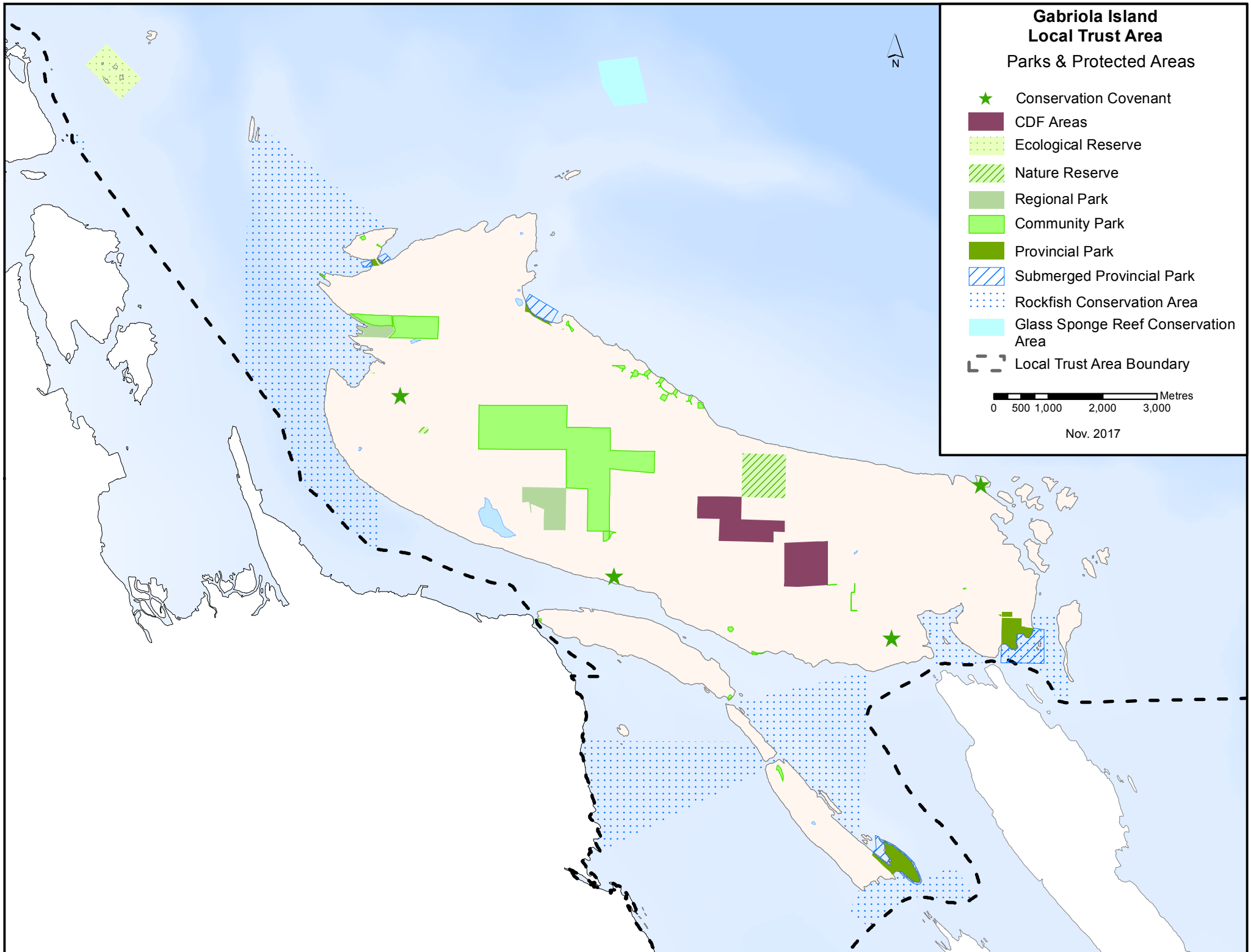
Gabriola Island Local Trust Area

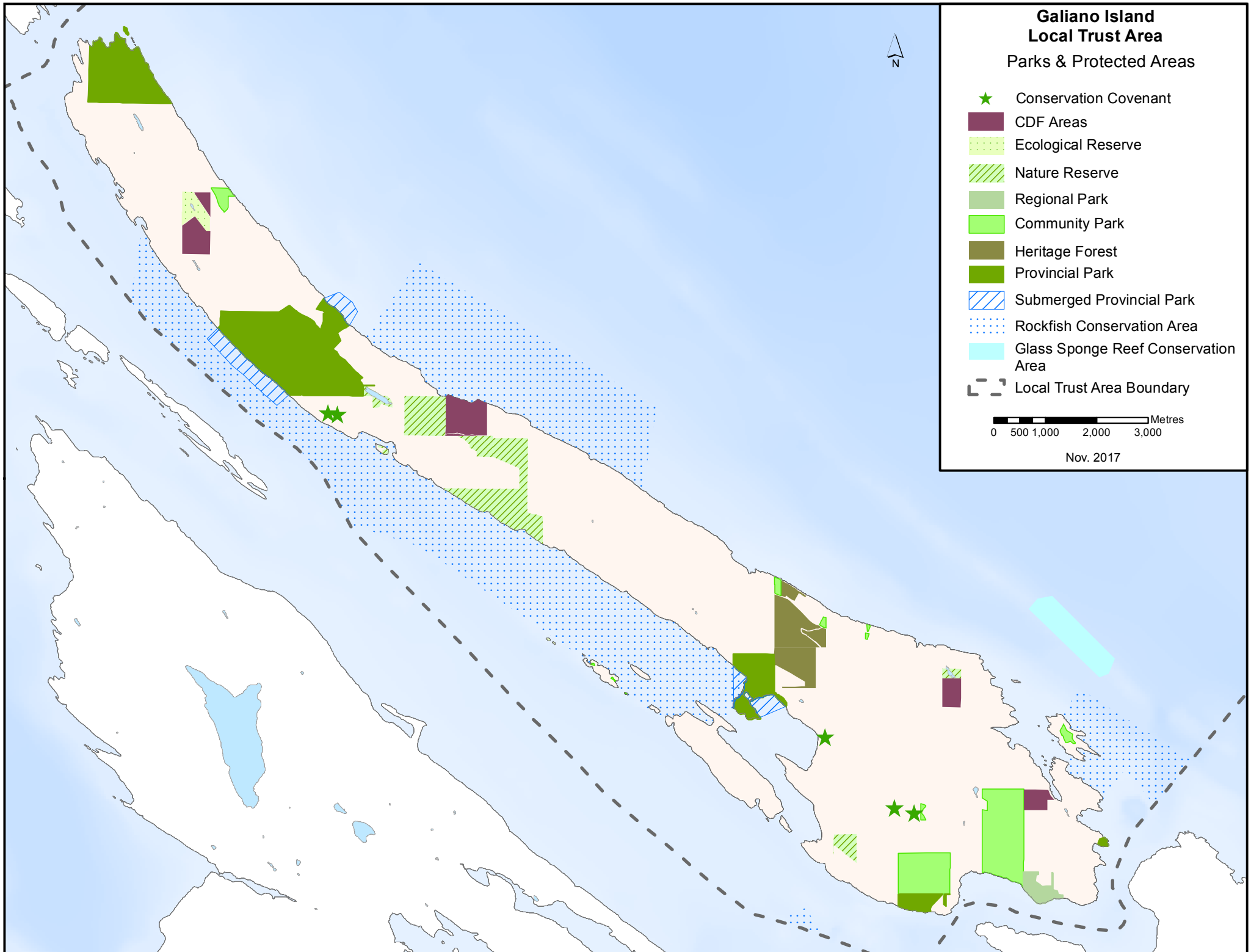
Parks & Protected Areas

- ★ Conservation Covenant
- CDF Areas
- ▨ Ecological Reserve
- ▨ Nature Reserve
- Regional Park
- Community Park
- Provincial Park
- ▨ Submerged Provincial Park
- ▨ Rockfish Conservation Area
- Glass Sponge Reef Conservation Area
- ⎓ Local Trust Area Boundary

0 500 1,000 2,000 3,000 Metres

Nov. 2017





Galiano Island Local Trust Area

Parks & Protected Areas

- ★ Conservation Covenant
- CDF Areas
- ▨ Ecological Reserve
- ▨ Nature Reserve
- Regional Park
- Community Park
- Heritage Forest
- Provincial Park
- ▨ Submerged Provincial Park
- ▨ Rockfish Conservation Area
- Glass Sponge Reef Conservation Area
- ▨ Local Trust Area Boundary

0 500 1,000 2,000 3,000 Metres

Nov. 2017