

WOODLAND ECOSYSTEMS

NORTH PENDER ISLAND DEVELOPMENT PERMIT AREA

What Are They?

Woodland ecosystems are open deciduous, and mixed deciduous-coniferous forests. They are found on North Pender Island in areas where conditions have prevented the establishment of dense coniferous forests.

Woodland ecosystems generally are restricted to rocky knolls, south-facing slopes and ridges where soils are shallow and extremely dry in summer. They are found along the coast of southern British Columbia, Washington, Oregon and California, and exist here because of the warm, dry climate and fire history of this area.

Two woodland ecosystem types are found on North Pender island:

Garry Oak Woodlands

These are biologically rich areas, that support an incredible diversity of plants, including close to 100 species considered to be at risk. In areas with deeper soils, Garry oak woodlands include stunning and diverse wildflower meadows.

Arbutus/Douglas-fir Woodlands

These areas are found on dry south facing slopes with rocky, nutrient-poor soils. They support only a few understory species such as dull Oregon grape and hairy honeysuckle.

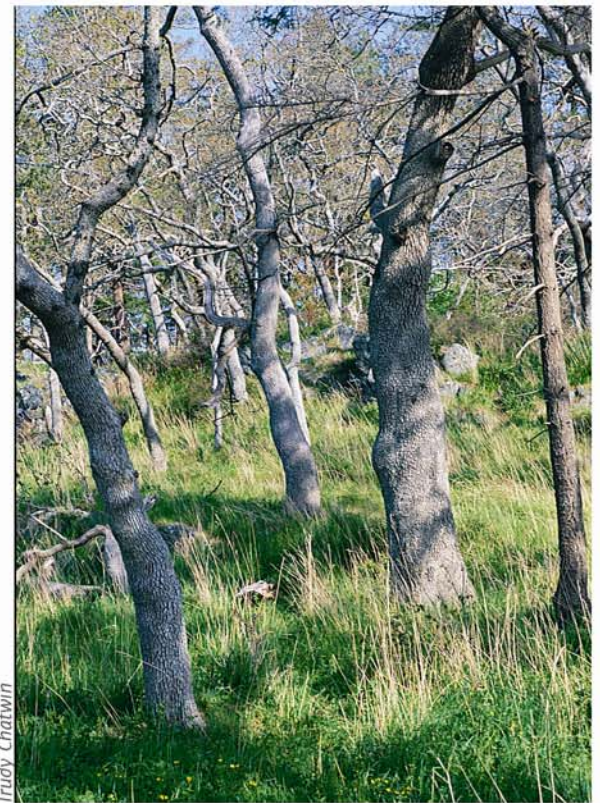


Neil K. Dawe

Why They Are Important

Woodland ecosystems are the most threatened ecosystem type found within the Islands Trust area. They are officially designated as nationally, provincially and regionally rare.

Garry oak woodlands support the highest plant species diversity of any terrestrial ecosystem in British Columbia. They have been particularly impacted by development.



Trudy Chatwin

Woodland ecosystems make up only 4.6% of North Pender Island

Their Purpose

The purpose of the Woodland Ecosystems Development Permit Area (DPA) is to offer protection to the remaining woodland ecosystems on North Pender Island by guiding any new development that might occur within them. The areas covered by the Woodland Ecosystems DPA are indicated in Schedule I of the North Pender Island Official Community Plan (OCP).

What Does This Mean?

If you have a property that is wholly or partially located within a Woodland Ecosystems DPA you will need to obtain a development permit from the Islands Trust before undertaking certain new land-altering activities identified in the North Pender Island OCP.

The regular maintenance of existing buildings and landscaping, as well as any development that takes place outside of the DPA does not require a Development Permit.



Islands Trust

Extent of Woodland Ecosystems DPA Areas on North Pender Island



How You Can Protect This Ecosystem

Establish a Surrounding Buffer

A protective vegetated buffer around a woodland area will help protect it from potentially harmful outside influences and disturbance.

Control Invasive Species

The open nature of woodlands and their increasing proximity to new developments makes them particularly vulnerable to the intrusion of non-native species such as Scotch broom and gorse.

Limit Access

Any form of human and domestic animal access may severely affect the understorey vegetation, soil, tree health, or stand age structure in these sensitive and very dry ecosystems.

Maintain the Existing Hydrologic Regime

Surface or groundwater drainage patterns can be easily and detrimentally altered by the construction of roads, trails, houses and gardens. Any changes to these patterns can seriously affect the health of these dry ecosystems.

Consider Establishing a Protective Covenant

Properties with woodland ecosystems may qualify for the Natural Area Protection Tax Exemption Program. This program provides landowners who permanently protect natural features of their land with the opportunity to receive a 65% exemption in property taxes on the protected portion of their land. www.islandstrustfund.bc.ca/naptep.cfm

Mark Kaarremaa



Associated Species

Animals

Alligator lizards, garter snakes, songbirds, bats, butterflies

Plants

Garry Oak, arbutus, Douglas-fir, oceanspray, hairy honeysuckle, false box, purple peavine, white fawn lily, common camas, electrified cat's tail moss

Rare Species

Sharp-tailed snake, Propertius duskywing butterfly, Western Screech Owl, apple moss

***Ecosystem DPAs guide
development in identified
ecologically sensitive areas***

For More Information

To determine if your land has a Woodland Ecosystems DPA on it consult the North Pender Island Official Community Plan (OCP). Copies of the OCP are available from Islands Trust offices in Victoria and Pender Island, and on-line at:

www.islandstrust.bc.ca/ltc/np

If you have any questions about DPAs please contact Islands Trust staff by phone by dialing 1.800.663.7867 and requesting 250.405.5151 or by email at npi@islandstrust.bc.ca.