



# Protecting Blue Carbon in the Islands Trust Area

2012 - 2014

Final Report  
Nearshore Eelgrass Inventory

[http://www.islandstrust  
conservancy.ca](http://www.islandstrustconservancy.ca)



Prepared for the Islands Trust and  
Islands Trust Fund by:

Nikki Wright, BA Executive Director  
SeaChange Marine Conservation Society

Leanna Boyer, BSc. MA  
Mayne Island Conservancy Society

Keith Erikson, R.P. Bio. Conservation  
Coordinator  
Galiano Conservancy Association

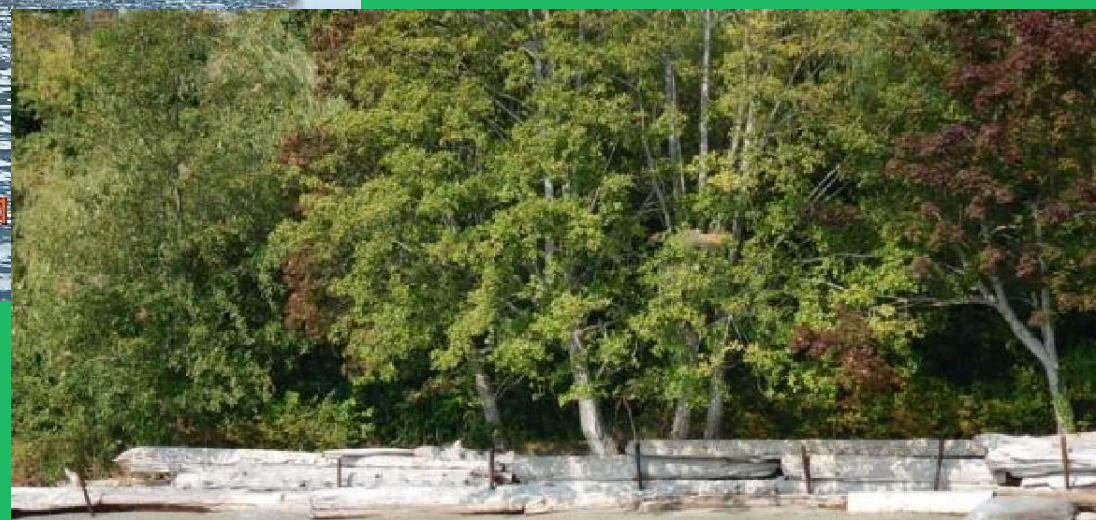


2018/08/16 10:40

49m 1017hPa

49°24'10"N 123°28'21"W

201



2018/08/16 10:05

53m 1017hPa

49°25'35"N 123°28'44"W

2018 08.16 10.05



For more information  
about the Green Shores  
Program, please  
contact us at:

[info@stewardshipcentrebc.ca](mailto:info@stewardshipcentrebc.ca)

# Marine Riparian Restoration













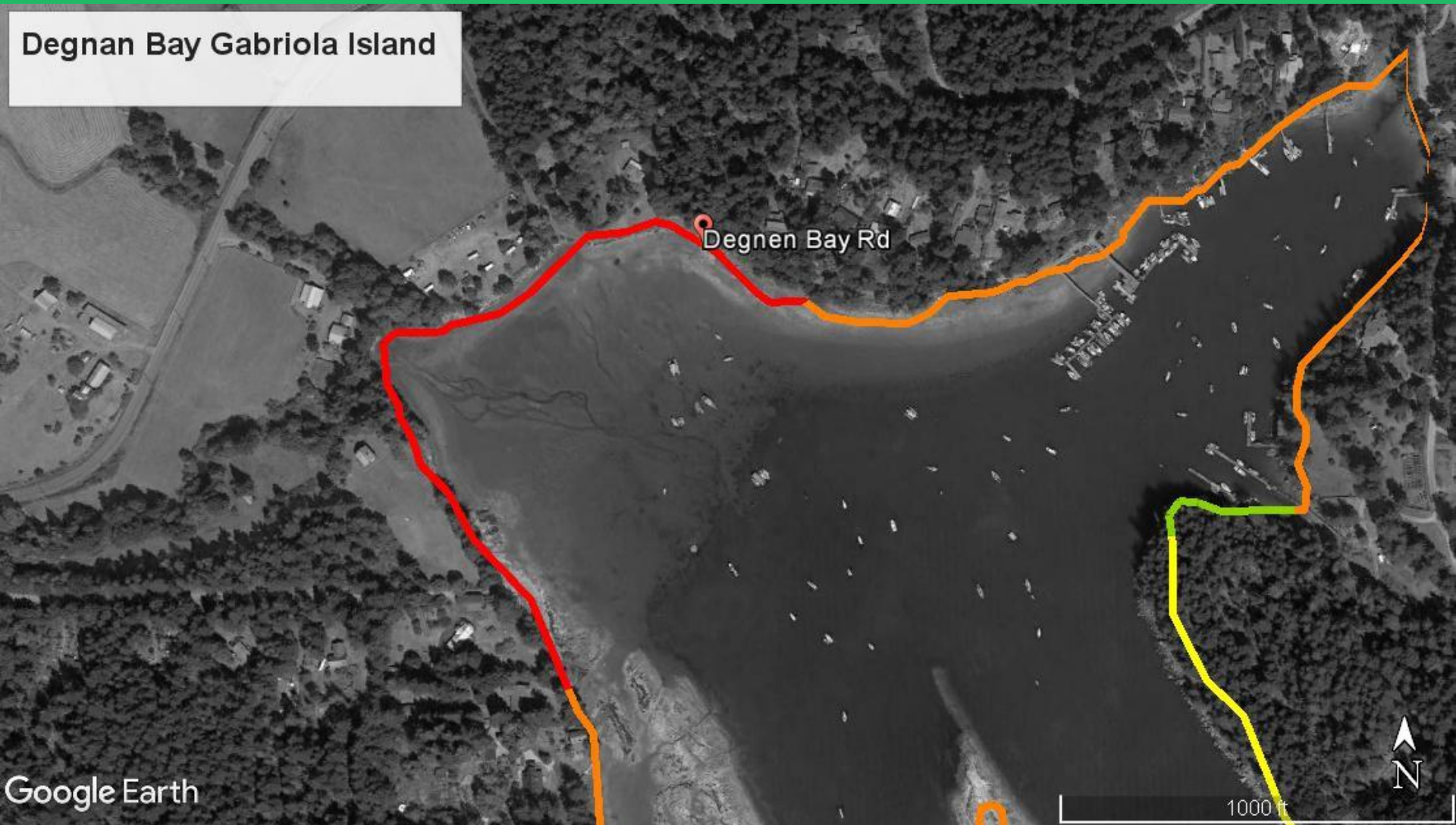
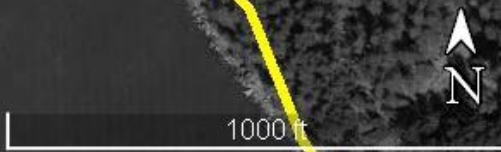


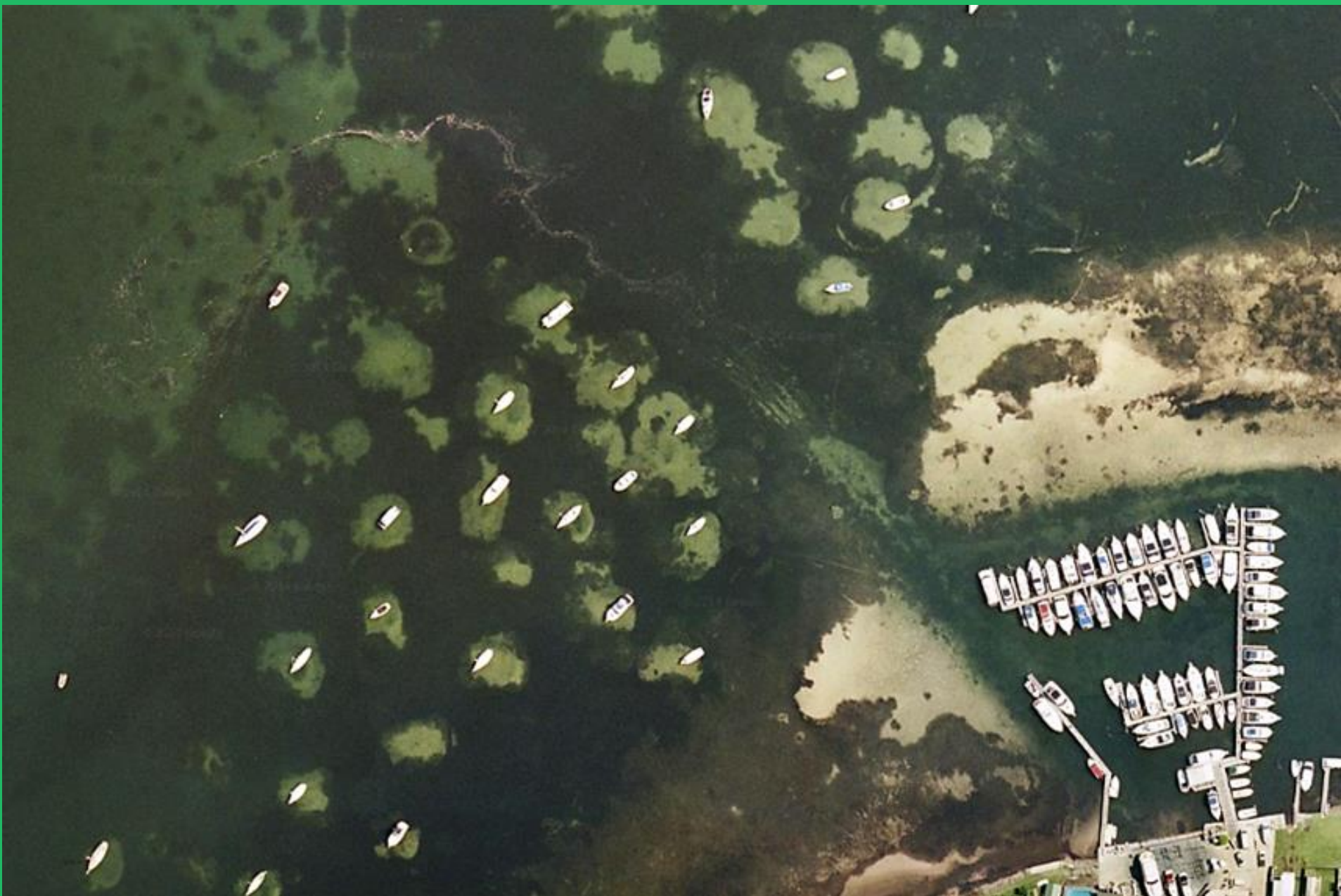


Degnan Bay Gabriola Island

Degnen Bay Rd

Google Earth







2018.11.13 00:15

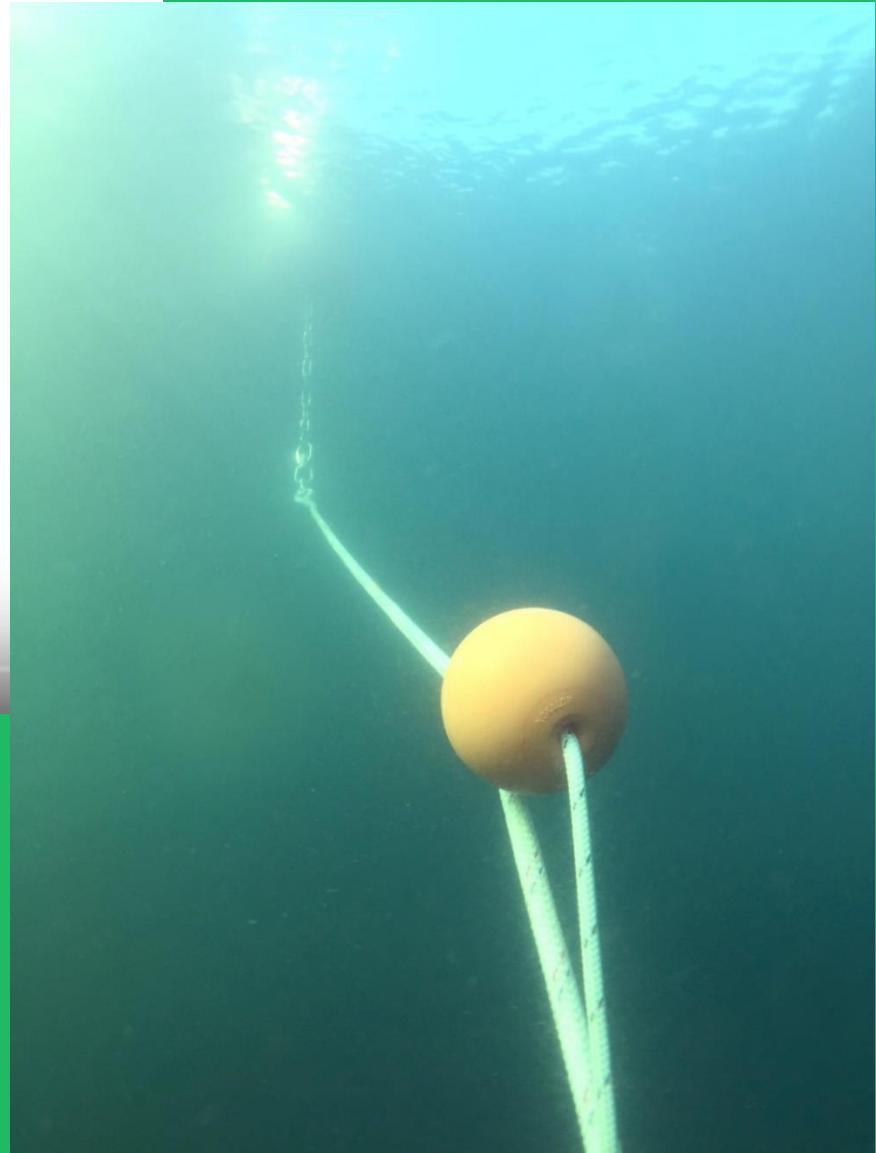
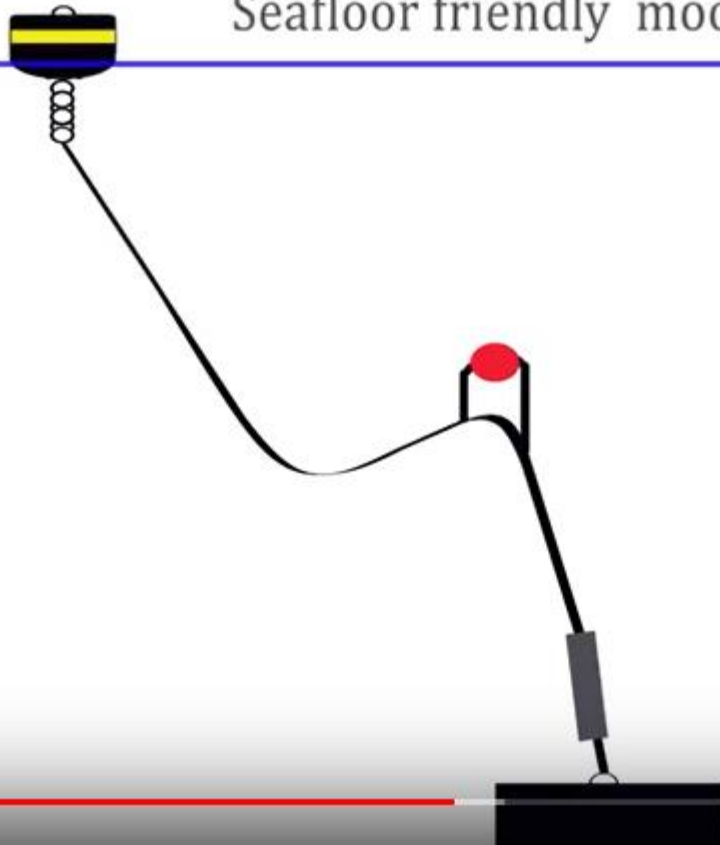


2018.03.18 14:08



2020.10.14 14:55

## Seafloor friendly mooring



# VOLUNTARY EELGRASS PROTECTION ZONE

## Anchor Out for Safety and for Salmon!

Protect your boat and important nearshore habitat by anchoring outside the Voluntary Eelgrass Protection Zone. This zone is marked by seasonal buoys (shown below). When buoys are not in place, please anchor seaward of the public docks.

## Protect Eelgrass

Approximately 40 acres of eelgrass grow along our mile-long waterfront in shallow marine waters, from +1.0 to -17.0 feet below MLLW (Mean Lower Low Water). Eelgrass is essential habitat for juvenile salmon, Dungeness crab and flatfish as well as forage fish like herring, surf smelt and sand lance. It also traps sediment to offset erosion and absorbs wave energy, helping to protect seawalls and pilings from storm damage.



## Safety Hazard & Habitat Damage

Boats and eelgrass are both at risk every time a vessel drops anchor into the loose sediments and fragile vegetation of this zone. Anchoring in soft sand and silt increases the chances of a vessel going adrift or aground. Anchors and chains also uproot plants, disturb sediment and cause damage that takes years to recover. Help us protect this important habitat.



This project has been funded wholly or in part by the United States Environmental Protection Agency under Assistance Agreement PC-00000181. The contents of this sign do not necessarily reflect the views and policies of the Environmental Protection Agency nor does mention of trade names or commercial products constitute endorsement or recommendation for use. Design by Jefferson County Marine Resources Committee. Artwork by Leah Studler.

[jeffersonmrc.org](http://jeffersonmrc.org)



# Help Protect Eelgrass

## Why?

Eelgrass meadows are essential habitat for many species including spawning fish, juvenile salmon and crabs. They are also feeding grounds for birds and mammals.



## How?

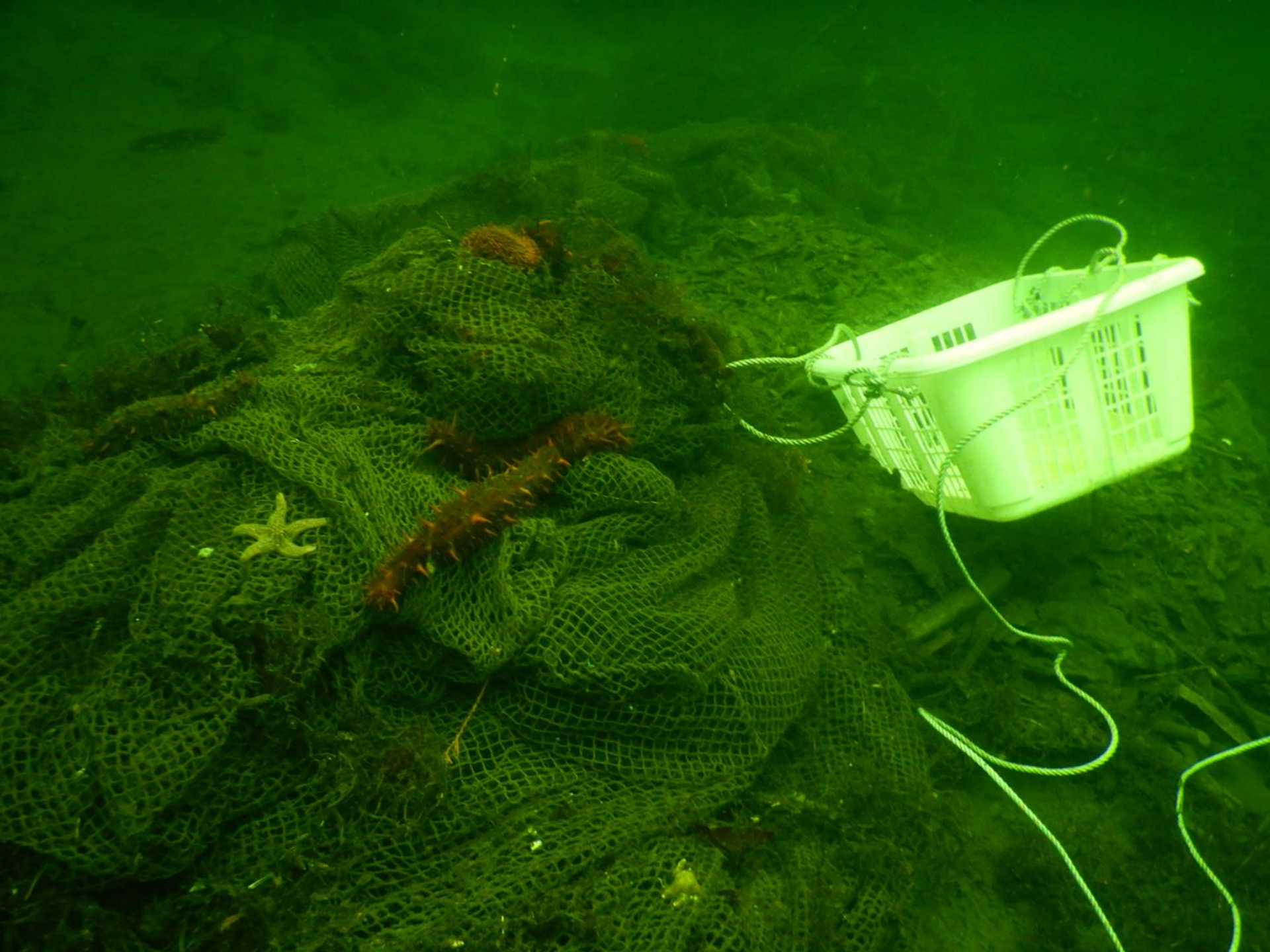
Anchor or moor deeper than 7m (23ft) chart depth.



For more information: [seachangesociety.com](http://seachangesociety.com)











2020.05.30 14:07





# Blue Carbon Meadows for the Future



# Thank you!

- Coastal Community Members
- Cynthia Durance, R.P.Bio.
- Islands Trust
- Ramona de Graaf
- Tavish Campbell
- Jamie Smith – Coastal Photography Studio
- Cameron Murray – Topographics Landscape Architects
- U.S. Fish and Wildlife Service
- Royal B.C. Museum Archives
- Niall Dunne for Green Shores Garden image
- Simon Fraser University
- Raincoast Education Society
- Parks Canada
- Commission for Environmental Cooperation



# Contact Information

Nikki: [Nikki@seachangelife.org](mailto:Nikki@seachangelife.org)

[www.seachangesociety.com](http://www.seachangesociety.com)

652-1662

Victoria: [Vic.postlethwaite@gmail.com](mailto:Vic.postlethwaite@gmail.com)

Aimee: [aimee.e.mcgowan@gmail.com](mailto:aimee.e.mcgowan@gmail.com)

