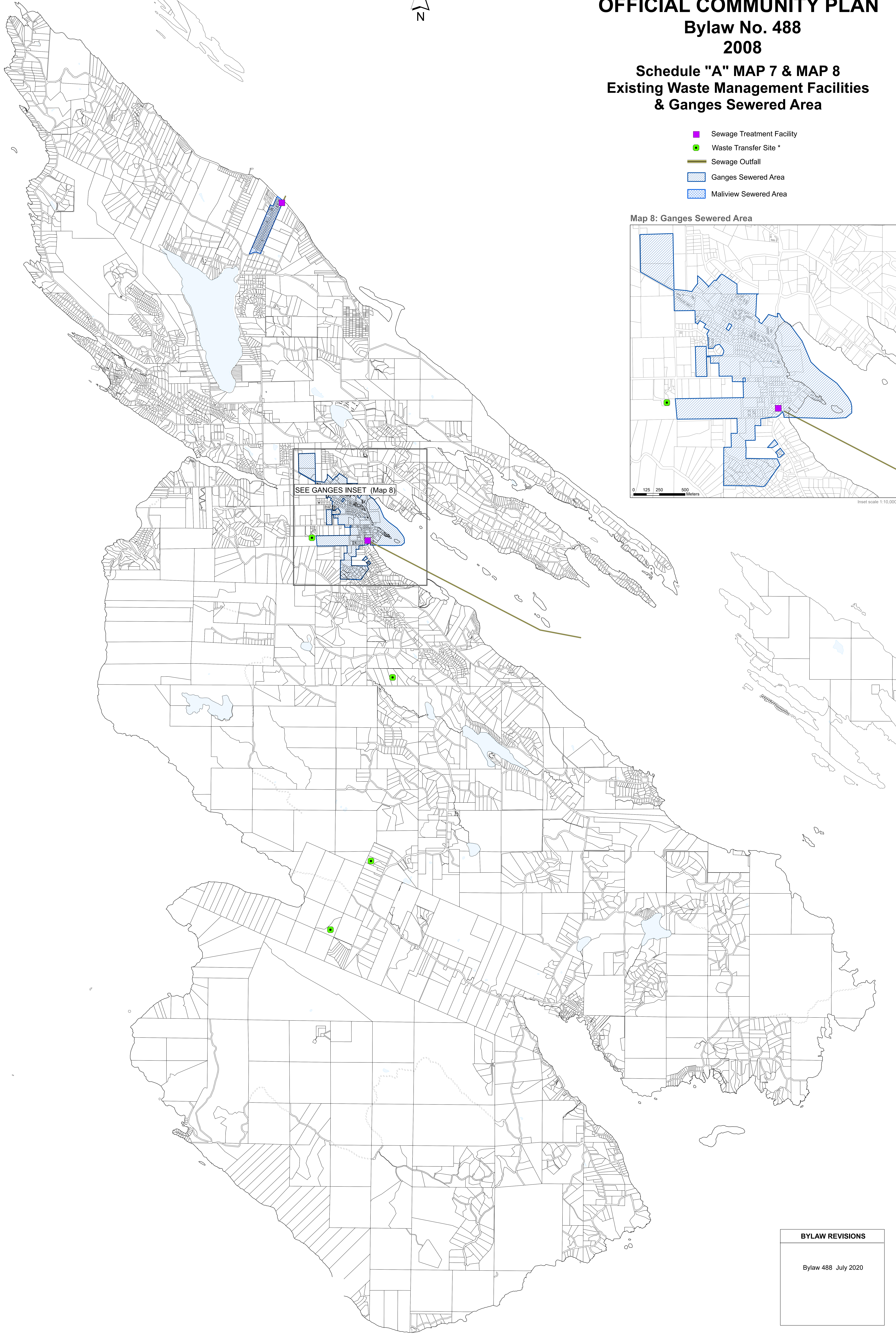
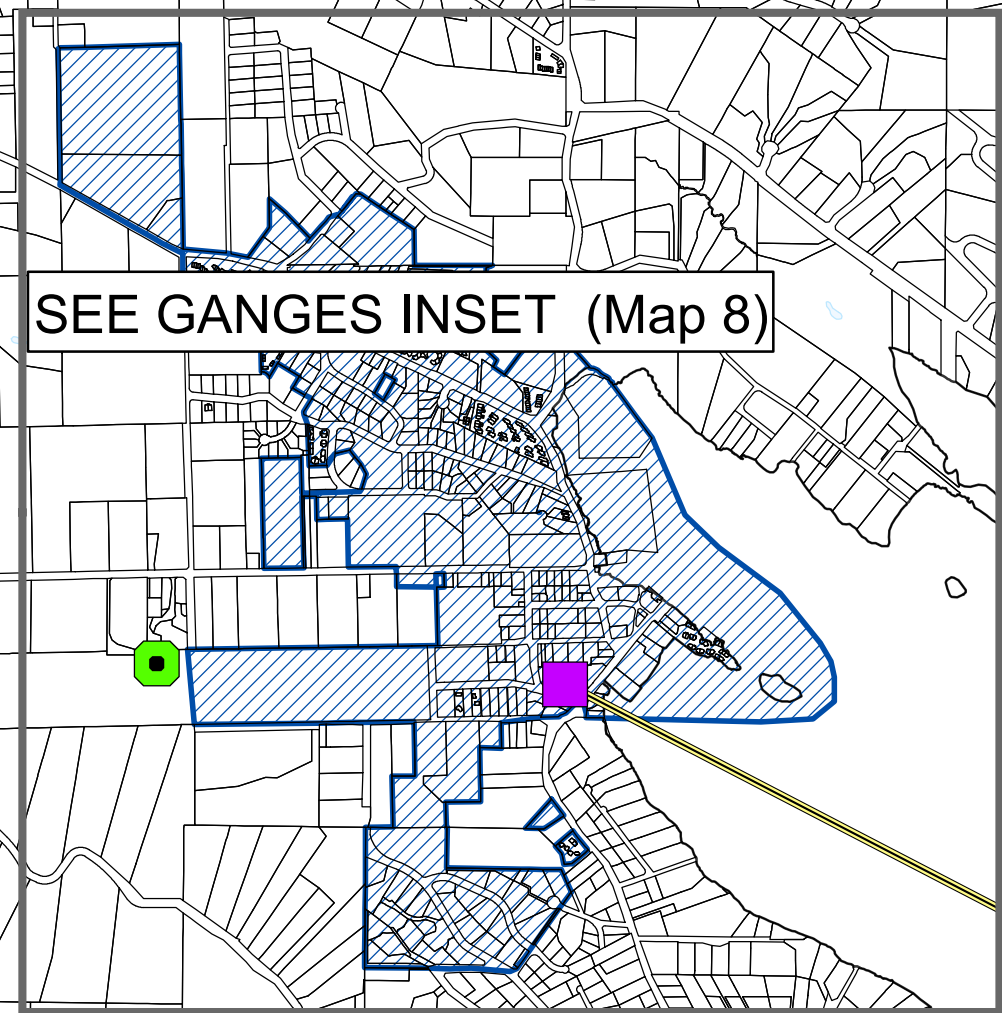
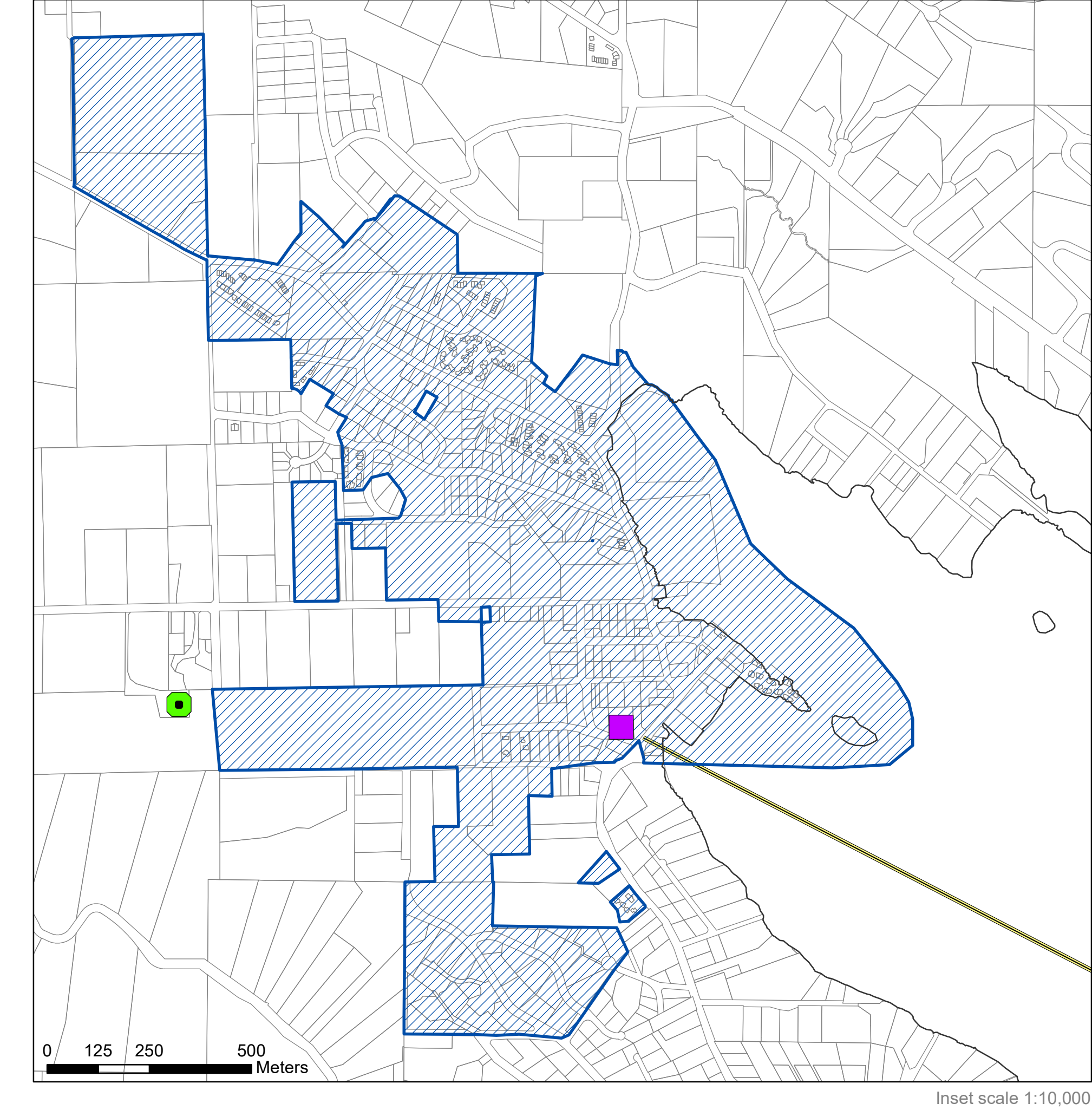


SALT SPRING ISLAND OFFICIAL COMMUNITY PLAN Bylaw No. 488 2008

Schedule "A" MAP 7 & MAP 8 Existing Waste Management Facilities & Ganges Sewered Area

- Sewage Treatment Facility
- Waste Transfer Site *
- Sewage Outfall
- Ganges Sewered Area
- Malview Sewered Area

Map 8: Ganges Sewered Area



BYLAW REVISIONS
Bylaw 488 July 2020

* Does not denote zoning conformance