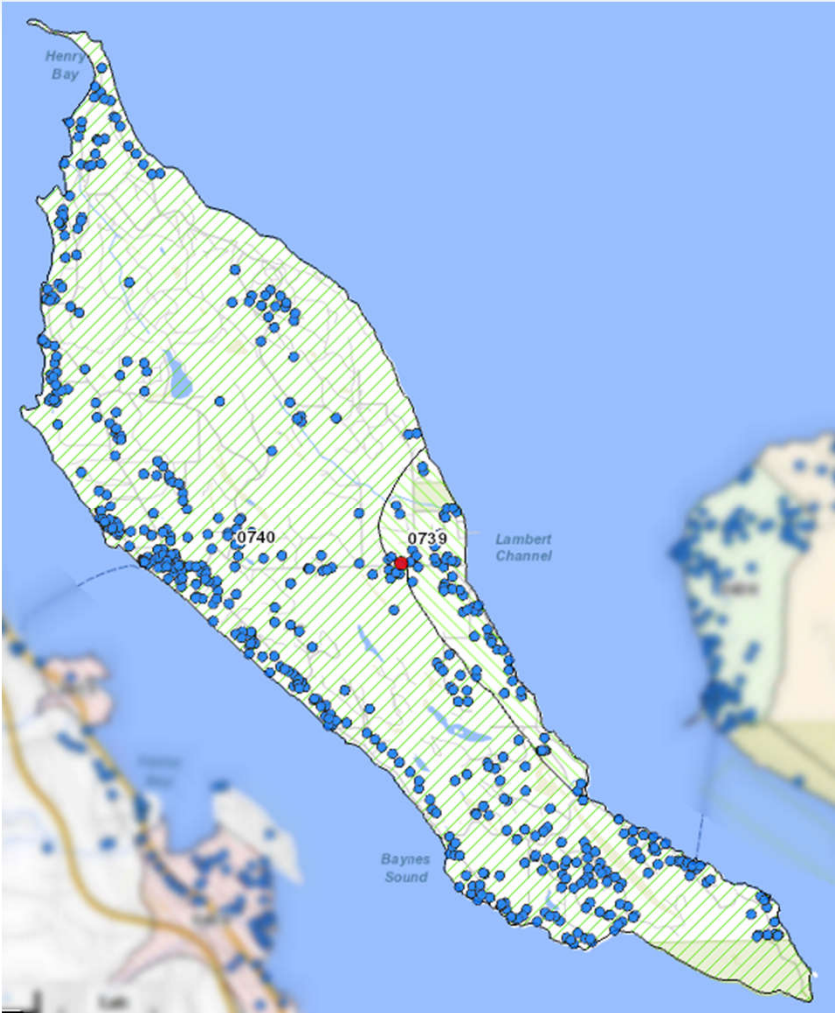


Denman Island Overview

Overview:

- 2 mapped aquifers
- 1 Observation well



	Sand & Gravel	Bedrock
Productivity	Low	Low
Development	Moderate	Moderate
Vulnerability	Moderate	High
Well Records	60	~490
Mean Depth	~85 ft	~120 ft
Mean Yield	~4.5 USGPM	~5 USGPM
Issues	Poor Yield	<ul style="list-style-type: none"> • Saltwater • Sulfur

Image Sourced from iMapBC:
<http://maps.gov.bc.ca/ess/sv/imapbc>