

# Conservation status of Mayne Island Local Trust Area

The Mayne Island Local Trust Area is one of 13 local trust areas and island municipalities that make up the Islands Trust Area. The Mayne Island Local Trust Area is located 20 km northeast of the Swartz Bay ferry terminal and is within the traditional territories of numerous First Nations who have cared for these lands and waters since time immemorial.

Beautiful Mayne Island is home to some of the rarest ecosystems in the world that are under threat from development, climate change and habitat degradation. The Islands Trust Conservancy does “nature check-ups” to measure

the state of island ecosystems to see how well we are meeting the Islands Trust’s mandate to “preserve and protect”. Guided by a science-based Regional Conservation Plan, our work is important because, like the species and habitats that support us, the quality of human life depends on ecosystem health. We all have a part to play in protecting these fragile islands in the Salish Sea for future generations.

## Species at risk



### Killer Whale (*Orcinus orca*)

Northern Pacific southern resident population  
Endangered (Federally), red listed (Provincially)  
Critical habitat includes entire Mayne LTA shoreline



### Purple martin (*Pyrolyta aphylla*)

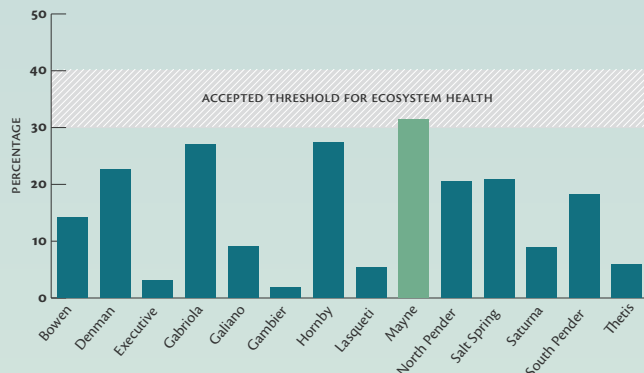
Blue listed (Provincially)

## Parks & protected areas

- Islands Trust Conservancy Nature Reserves
- Nature Reserve
- Park Community
- Park Federal
- Park Regional
- Park Submerged Federal
- Rockfish Conservation Area
- Glass Sponge Reef Fishing Closure Area



## Land Converted to Human Use in the Islands Trust Area



Once land is converted for human use, that land is less available for nature. As land conversion reaches or goes above a 30-40% threshold, the number of species in a given habitat decline more rapidly.



Learn more at [islandstrustconservancy.ca](http://islandstrustconservancy.ca)

# How do forests help us?

CARBON EMISSIONS ABSORBED BY MAYNE FORESTS ANNUALLY

EQUIVALENT CARBON EMISSIONS EMITTED BY PASSENGER VEHICLES ANNUALLY

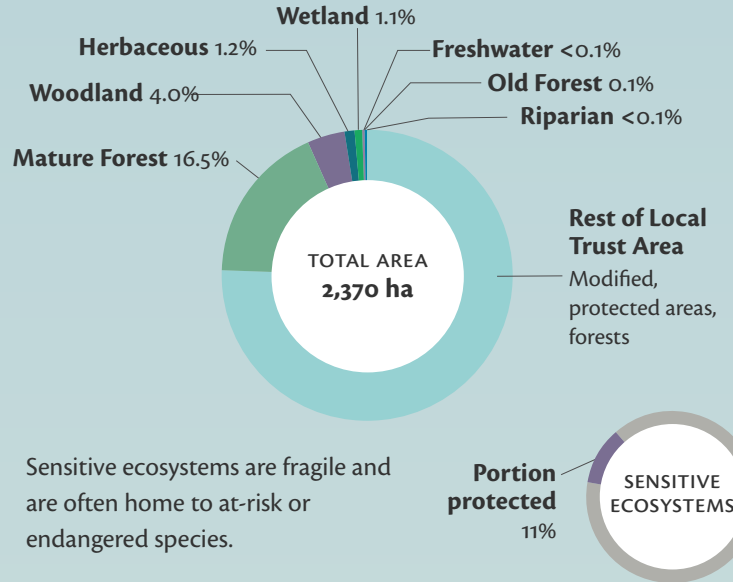


= 1,000 tonnes of carbon

= 500 vehicles

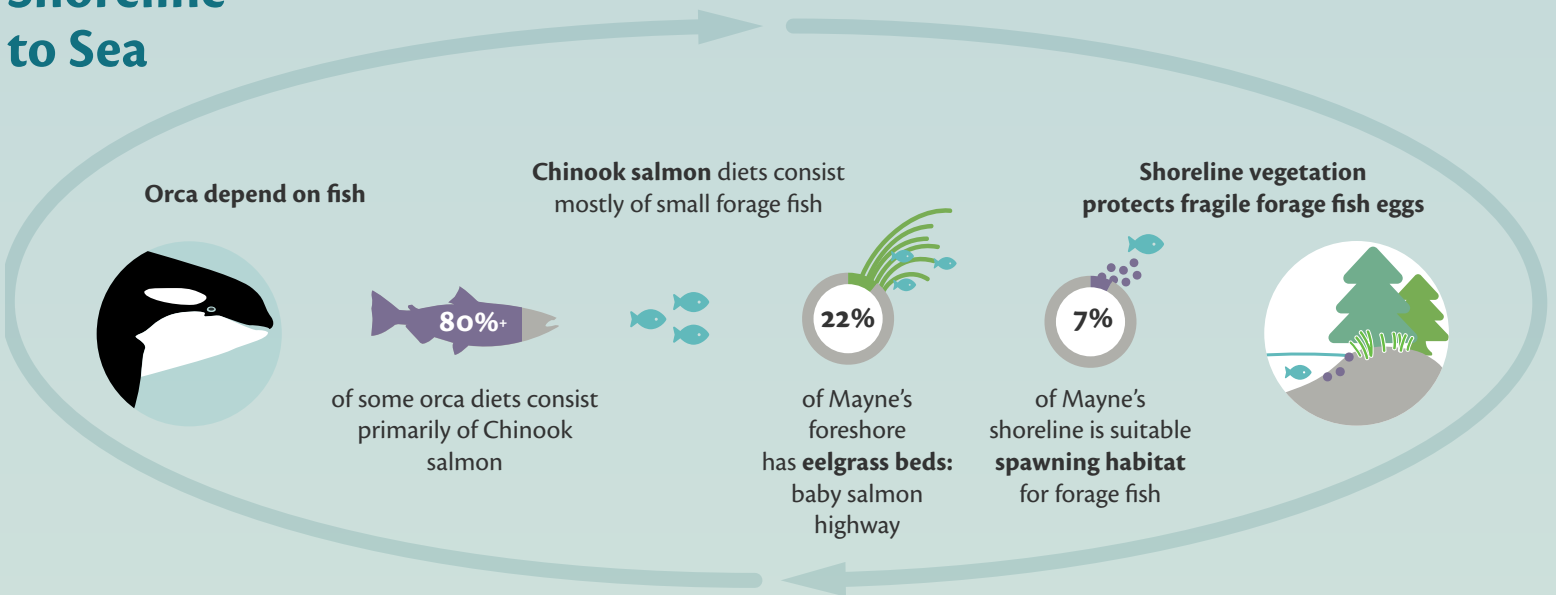
The forests on Mayne Island sequester 5,119 tonnes of carbon/year which equates to removing the emissions of 1,081 passenger vehicles per year. That's the equivalent of every Mayne resident giving up their vehicle!

# Sensitive ecosystems



Sensitive ecosystems are fragile and are often home to at-risk or endangered species.

# Shoreline to Sea



**Marine health starts at the shoreline. Your actions can make a difference!**

# Modified Ecosystems as of 2017

More than 65% of the Islands Trust Area is in private land ownership. Pressures to develop and change the natural landscape are tremendous. The Islands Trust Conservancy works with landowners to protect private land with conservation covenants, land donations, fundraising for nature, and stewardship.

